



# IECA Spring Conference Abridged Guide

**April 25-27, 2018**

JW Marriott Hotel  
110 East 2<sup>nd</sup> Street, Austin, TX 78701

To help you plan your schedule in advance, we have pulled together just a few pages of the Conference Guide that you will be receiving in Austin. Included here:

- **NEW!** Read the new Schedule-At-A-Glance carefully...lots of exciting changes and new initiatives!
- Thursday Fair Set-Up and Shipping Information
- Exhibit Hall Vendors
- **NEW!** Master Class now on Wednesday afternoon, concurrent with 100- and 200-series breakout sessions
- Educational Sessions from Wednesday through Friday
- Thursday Fair and Friday Swap Tables Lists (as of 4/4/2018)
- 2018 Steven R. Antonoff Award for Professional Achievement: Judith Berg
- **NEW on Friday:** ACE Talks, College Showcase, and School Water Cooler Talks (Breakout #506)
- Conference Participants List (as of 4/4/2018)

We look forward to seeing you soon!

The IECA Conference Team  
conference@IECAonline.com  
703-591-4850

# Conference Information

## Badges

Badges must be worn to all conference events. They serve as your admission to all events at the hotel including meals, workshops, general sessions, receptions, Thursday's networking reception, and the Fair/Swap.

## Continuing Education Hours

Attendees can earn CEs at IECA's national conferences. A Continuing Education Form has been inserted into this Conference Guide. Additional forms are available at the Conference Registration desk and the Member Services table in Conference Central. See page 10 for details.

## Smoking, Cell Phones, Pagers

Smoking is prohibited during all conference events including indoor and outdoor meals, breaks, seminars, the School & College Fair, Information Swap, and in Conference Central. Please turn off the ringers on all cell phones and pagers, and set your phones to vibrate. If you need to make or receive a call, please do so outside of the meeting rooms.

## Emergencies / First Aid

The safety and security of attendees and staff is the first priority of IECA and the conference hotel. For fire or medical emergencies, dial the hotel operator from any house phone.

## Conference Attire

Attire for all conference events is business casual, and you are encouraged to wear comfortable walking shoes.

## Special Diets

If you requested a special meal on your conference registration, it has been ordered for you. Simply let your waiter know of your vegetarian, kosher, or other request as soon as you are seated. Special meals were only ordered for those who made their requirement known in advance.

## Free Conference Wifi

IECA is providing FREE wifi throughout the IECA meeting space. Conference wifi: JWMarriott\_CONFERENCE  
Password: IECAinTX

## Need Assistance?

The IECA registration desk in Conference Central doubles as an attendee assistance area and information counter. Messages for other attendees may be posted on the bulletin board.

IECA events are accessible to all participants. If you require assistance due to any physical challenge, speak to an IECA staff member at registration. The conference hotel complies with the regulations set by the Americans with Disabilities Act.

## Educational Sessions Program Policy

Educational sessions are noncommercial forums. Individuals should refrain from endorsing specific products, schools or programs. Educational sessions are not to be used as a place for direct promotion of a product or service.

## Consent to Use of Photographic Images

Registration and attendance at, or participation in, IECA meetings and other activities constitutes an agreement by the registrant to IECA's use and distribution of the registrant or attendee's image or voice in photographs, videotapes, electronic reproductions, and audiotapes of such events and activities.

## Using a Tablet or Laptop?

Those using a laptop to take notes during sessions, or those involved in other activities that make similar noise are asked to sit in the rear two rows during breakout and general sessions to ensure their activities do not distract other attendees.

# Networking:

## Badge Color-Coding System

IECA uses a color-coding system to assist you in quickly finding colleagues at the conference. All badges identify attendees by their type of institution. Note the **stripe color** on the name badge:

	<b>Gold:</b>	<b>IECA Professional Members</b>
	<b>Silver:</b>	<b>IECA Associate and Student Members</b>
	<b>Light Blue:</b>	<b>Colleges &amp; Universities</b>
	<b>Bright Blue:</b>	<b>Gap Year &amp; Travel Programs (non-therapeutic)</b>
	<b>Dark Blue:</b>	<b>Therapeutic Post-Secondary/ Transition Programs</b>
	<b>Red:</b>	<b>Traditional Boarding and Day Schools</b>
	<b>Yellow:</b>	<b>Therapeutic and Behavioral Programs</b>
	<b>Light Green:</b>	<b>LD-Focused Schools and Programs</b>
	<b>Bright Green:</b>	<b>Post-Secondary LD Programs</b>
	<b>Purple:</b>	<b>Non-IECA Educational Consultants</b>
	<b>Orange:</b>	<b>Related Service Companies</b>
	<b>Black:</b>	<b>Vendors of Products and Services</b>

**NEW!** All IECs now have their self-selected specialty areas of interest on their name badges. Look for these codes listed prominently under their names on the badges to help you quickly identify those IECs working with the students you serve:

- S:** Traditional Day/Boarding School advising
- C:** College advising
- G:** Graduate School advising
- T:** Therapeutic/At-Risk advising
- L:** LD advising
- I:** International advising

**Foundational:** For those with limited experience, seeking core knowledge

**Applied:** For those with core experience, seeking advanced knowledge

# Breakout Session Codes

We have a Track System to assist attendees in locating breakout sessions significant to the speciality. Tracks are noted as part of the breakout session descriptions in the Wednesday, Thursday, and Friday tabbed sections.

- C** – sessions in the College Track
- S** – sessions in the Day & Boarding School Track
- L** – sessions in the Learning Disabilities Track
- T** – sessions in the Therapeutic/Behavioral Track
- B** – sessions in the Business of Consulting Track
- I** – sessions in the International/Global Track
- G** – sessions in the Graduate School Track

# IECA College & School Fair

Thursday, April 26, 2018 • 9:00–11:15 a.m.



Thursday's Fair room will be divided into the following six categories:

- Colleges & Universities
- Traditional Day & Boarding Schools
- Gap Year & Travel Programs
- LD-focused Schools & Programs
- Post-Secondary LD Schools & Programs (non-therapeutic)
- Vendors and Related Service Companies (i.e. publisher, software)

The purpose of this event is information exchange and professional networking, so displays that impede this exchange, or interfere with other schools/colleges are not permitted. Please read the following information so you understand what to expect at our conference.

## BOOTH INFORMATION

- **Displays/Banners:** Please do not bring large tabletop or stand-up displays. All institutions will **share** a 6 ft. table with another institution, therefore **you must be able to stand behind your table and see over displayed materials**. If your display prevents the easy viewing of another program's material, you will be asked to remove it. IECA provides a small sign that identifies your school. You may wish to bring a banner (3-4') to drape the front of your table. Banners or any other materials may not be attached to nearby walls.
- **Shipping:** If you ship a box to the conference hotel, please make sure that along with your name, your company name and the hotel name and address, the label says: **"IECA Thursday Fair."** *Please read the following page carefully for shipping address, instructions, and handling/storage fees.*
- **Electricity:** You will not have access to electrical outlets and may not use extension cords in the room. Laptop computers running on batteries may be used, with the volume set low enough as to not interfere with other tables.
- **Printed Materials:** As most consultants prefer to have informational materials mailed to them, we recommend that you bring only small quantities of view books, campus newspapers, and other materials. A one-page description which highlights the unique features of your campus and program, special strengths or attributes or new developments on campus may be the most effective offering. Likewise, there is no need for "giveaway" items.
- **Other Fair Attendees:** From 10:30 to 11:15 a.m., therapeutic school and program representatives will be invited into the Fair to join consultants in visiting with colleges, traditional day/boarding and LD schools, and post-secondary representatives.

## SET UP AND REMOVAL

- **Thursday Set-up: 8:15–9:00 a.m., Griffin Hall on Level 2 of the JW Marriott Austin. Note:** Only **registered attendees** will be able to set up and staff your space. Though we realize that you may have a friend, colleague or spouse who may wish to help you carry materials, please understand that they will not be able to enter the ballroom unless they are fully registered for the Fair.

This 45-minute set-up time will be sufficient, as you should not have much to set up. Consultants will not be permitted in the room until 9:00 a.m. If you ship materials to the hotel, you will need to contact the hotel to have them delivered to you personally the night before or early Thursday morning.

- All materials should be removed from the Fair area immediately after your scheduled time as the room will be used for other purposes throughout the day. Any materials left, including banners and personal items, are likely to be discarded.
- If you wish to ship materials home following the Fair, please bring your own FedEx or UPS shipping labels with your FedEx or UPS account number.

# Shipping Instructions for IECA Fair

Thursday, April 26, 2018



## PACKAGE LABELING INSTRUCTIONS:

**Packages should not arrive earlier than Monday, April 23**

Please number each box in sequence (i.e. 1 of 1, 2 of 3, etc.)

JW Marriott Austin

Attn: **(Your Name & Cell Phone) - Guest**

**IECA THURS. FAIR - (Your Company Name)**

110 E 2<sup>nd</sup> Street, Austin, TX 78701

## Handling & Delivery Fees:

Package Weight	Inbound or Outbound Package Handling Fee	Inbound or Outbound Delivery or Pickup Fee
0.0 – 1.0 pounds	No Charge	\$5.00
1.1 – 10 pounds	\$10.00	\$15.00
10.1 – 20 pounds	\$15.00	\$20.00
20.1 – 30 pounds	\$20.00	\$30.00
30.1 – 40 pounds	\$25.00	\$40.00
40.1 – 50 pounds	\$25.00	\$50.00
50.1 – 75 pounds	\$25.00	\$50.00
75.1 – 100 pounds	\$25.00	\$70.00
Crate & Pallet *	\$.75 per lb (\$150.00 minimum)	\$.75 per lb (\$150.00 minimum)

## Storage & Oversize Fee:

Days	Storage Fee Per Day	Oversize Fee Per Day
1 – 5 Days	No Charge	No Charge
6 – 7 Days	\$25.00	\$25.00
8 Days and Over	\$50.00	\$25.00

Package Storage Fees will apply to each package received and stored for more than five calendar days. Items measuring over 6.5 feet on all sides are considered oversize and will be assessed the Oversize Fee if stored for more than five calendar days.

*\* For inbound/outbound pallets or crates, the receiving and delivery charges are consolidated into a single fee of .75 p/lb. (\$150 minimum), which is applied to each pallet/crate handled. A labor fee of \$70.00 per hour will apply for breaking down pallets, building pallets, or excessive package handling/moving due to a customer's request. The labor fee can be charged in 15-minute increments.*

## FedEx Office Business Center Operating Hours

Monday–Friday: 7:00 a.m.–7:00 p.m.

Saturday: 9:00 a.m.–5:00 p.m.

Sunday: 9:00 a.m.– 5:00 p.m.

To speak to a FedEx rep, call 512-391-1816



# Schedule At-A-Glance

Wednesday ★ April 25

7:30 a.m.			7:30 a.m.–7:00 p.m. <b>Conference Registration Open</b> <i>Conference Central, Lone Star Foyer, Level 3</i>	
8:00 a.m.				
8:30 a.m.	8:30–11:30 a.m. <b>Pre-Conference Workshops and Campus Tours</b> <i>see page 15 for workshop rooms</i>			
Lunch on your own				
1:00 p.m.	1:00–2:15 p.m. <b>Opening General Session with Keynote Speaker, Angela Maiers</b> <i>see page 48 for information Lone Star Salon D, Level 3</i>		8:00 a.m.–6:00 p.m. <b>Vendor Hall and Networking Lounge Open</b> <i>Conference Central, Lone Star Foyer, Level 3</i>	
2:15 p.m.	2:15–3:00 p.m. <b>Dedicated Vendor Hall Time</b> <i>Conference Central, Lone Star Foyer, Level 3</i>			
3:00 p.m.	3:00–4:15 p.m. <b>Breakout and Discussion Sessions (100 Series)</b> <i>see pages 50–51 for information</i>	3:00–5:30 p.m. <b>Master Class on the Opioid Crisis</b> <i>see page 48 for information Lone Star Salon D, Level 3</i>		
4:30 p.m.	4:30–5:45 p.m. <b>Breakout and Discussion Sessions (200 Series)</b> <i>see pages 52–53 for information</i>			
5:45 p.m.				
6:00 p.m.	6:00–6:30 p.m. <b>New Attendee Orientation for School, College, and Therapeutic Program Representatives</b> <i>Room 307, Level 3</i>			
7:15 p.m.				5:45–7:15 p.m. <b>Hosted Receptions</b> <i>see page 13 for information Level 2</i>

# Thursday ★ April 26

# Schedule At-A-Glance

7:00 a.m.		7:00–8:30 a.m. <b>Continental Breakfast</b> <i>Conference Central, Lone Star Foyer, Level 3</i> (seating in Lone Star Salon E)	7:00 a.m.–6:00 p.m. <b>Vendor Hall and Networking Lounge Open</b> <i>Conference Central, Lone Star Foyer, Level 3</i>	7:00 a.m.–7:00 p.m. <b>Conference Registration Open</b> <i>Conference Central, Lone Star Foyer, Level 3</i>
7:30 a.m.	7:30–9:00 a.m. <b>Consultant Roundtables</b> All Specialties: for member and non-member consultants only <i>see page 62 for topics</i> <i>Lone Star Salon D, Level 3</i>			7:30–8:00 a.m. <b>Guided Meditation</b> <i>Room 307, Level 3</i>
8:15 a.m.		8:15–9:00 a.m. <b>Set Up for College &amp; School Fair</b> <i>Griffin Hall, Level 2</i>		
9:00 a.m.	9:00–11:15 a.m. <b>School &amp; College Fair</b> <i>Griffin Hall, Level 2</i>			
9:30 a.m.		9:30–10:30 a.m. <b>Therapeutic Community Discussions</b> <i>see page 63 for topics</i> <i>Lone Star Salon D, Level 3</i>		
10:30 a.m.	10:30–11:15 a.m. <b>School &amp; College Fair Welcomes Therapeutic Schools and Programs</b> <i>Griffin Hall, Level 2</i>			
11:15 a.m.	11:15 a.m.–12:15 p.m. <b>IECA Community Forums: College, School, and Therapeutic</b> for IECA member consultants only <i>see page 11 for information—Level 3</i>			
12:15 p.m.	12:15–1:30 p.m. <b>Lunch</b> <b>Presentation by Denison University President at 12:30 p.m.</b> <b>followed by Steven R. Antonoff Award presentation</b> <i>see pages 60-61 Lone Star Salon D, Level 3</i>			
1:00 p.m.				
1:30 p.m.	1:30 – 2:45 p.m. <b>Breakout and Discussion Sessions (300 Series)</b> <i>see pages 64–65 for information</i>			
2:45 p.m.	2:45–3:30 p.m. <b>Dedicated Vendor Hall Time</b> <i>Conference Central, Lone Star Foyer, Level 3</i>			
3:30 p.m.	3:30–4:45 p.m. <b>Breakout and Discussion Sessions (400 Series)</b> <i>see pages 66–67 for information</i>			
5:00 p.m.	5:00–6:00 p.m. <b>IECA Community Forums: Global, Graduate School, and LD</b> for IECA member consultants only <i>see page 11 for information—Level 3</i>	5:00–6:00 p.m. <b>Affinity Group Gatherings</b> for IECA member consultants only <i>see page 12 for information—Level 3</i>	4:45–6:00 p.m. <b>Hosted Receptions</b> <i>see page 13 for information</i> <i>Level 2</i>	5:00–6:00 p.m. <b>Friends of Bill W</b> <i>Room 307, Level 3</i>
6:00 p.m.	6:00–7:00 p.m. <b>IECA Networking Reception</b> <i>Lone Star Salon D, Level 3</i>			
7:00 p.m.			7:00 p.m. <b>Hosted Receptions</b> <i>see page 13 for information—Level 2</i>	

# Schedule At-A-Glance

Friday ☆ April 27

7:00 a.m.	7:00–9:30 a.m. <b>Final Dedicated Vendor Hall Time and Networking Lounge Open</b>		
7:30 a.m.	7:45–9:15 a.m. <b>Continental Breakfast</b> <i>Conference Central, Lone Star Foyer, Level 3 (seating in Lone Star Salon E)</i>	7:30–9:15 a.m. <b>Annual Membership Meeting with Breakfast</b> for all IECA Member Consultants: Professional, Associate, & Student Members <i>Lone Star Salon C, Level 3 see page 81 for information</i>	7:30–8:00 a.m. <b>Guided Meditation</b> <i>Room 307, Level 3</i>
9:30 a.m.	9:30–11:00 a.m. <b>General Session with ACE Talks</b> <i>Lone Star Salon D, Level 3 see page 80 for information</i>		
11:15 a.m.	11:15 a.m.–12:30 p.m. <b>Set Up for Therapeutic Information Swap</b> <i>Griffin Hall, Level 2</i>	11:15 a.m.–12:30 p.m. <b>Breakout and Discussion Sessions (500 Series)</b> <i>see pages 82-83 for information</i>	11:15 a.m.–12:30 p.m. <b>School Water Cooler Talks</b> <i>see page 83 for information 305, Level 3</i>
12:30 p.m.	12:30–2:30 p.m. <b>Therapeutic Information Swap with Lunch</b> <i>Griffin Hall, Level 2</i>	12:30–1:15 p.m. <b>Lunch for all IECs</b> <b>Therapeutic Information Swap</b> <i>Griffin Hall, Level 2</i>	12:30–1:15 p.m. <b>Therapeutic Information Swap Welcomes Traditional Schools</b> <i>Griffin Hall, Level 2</i>
1:15 p.m.	1:15–2:30 p.m. <b>College Showcase</b> <i>see page 80 for information Lone Star Salon D, Level 3</i>		
2:30 p.m.	2:30 p.m. <b>Conference Closes</b>		

# Work Your Way Through Conference **Central!**

Conference Central, Lone Star Ballroom Foyer, Level 3



- Network with reps from the **top product and service companies** who are reaching out specifically to the IEC community. See vendor list on pages 38-41.
- Enjoy **breakfast** Thursday & Friday mornings and **refreshments** during our breaks on Wednesday & Thursday.
- **Connect with your colleagues!** Conference Central has become the gathering spot. “Meet me in Conference Central” is a common text to friends and colleagues!
- Visit the exhibitors and **enter drawings for outstanding prizes** (including conference registrations, an iPad, Bose headphones, gift cards, and more) and pick up exhibitor giveaways.
- Check out our **Discussion Zone in Conference Central** to take part in pop-up and planned conversations with peers on topics that go beyond the breakout schedule. Check out the board for discussion topics & times... or add your own!
- Have a professional **digital photo taken**—in seconds and for free—that can be used in print materials, on your website or social media pages, and upload to your profile on IECA’s new website at the Headshot Lounge.
- Stop by the IECA membership table for membership information and marketing materials, enter our **Grand Prize drawing** (courtesy of GuidedPath/ Plan My College), and get advice on **how to build out your profile on the IECA website**. Also pick up **packets of your favorite brochures**—already bundled & ready for the taking at no cost.



Thanks to JRI’s Therapeutic Residential and Day Schools, and Shrub Oak International School for sponsoring Conference Central.



# Vendors Drawings

Stop by these vendor tables

and drop off your business card to be eligible for the following drawings.

## 360 Planner

- ★ Three months free software subscription (two winners!)
- ★ 50% off financial aid filing package
- ★ 50% off financial positioning package

## American Institute of Certified Educational Planners (AICEP)

- ★ Waiver of all application and exam fees for CEP credential (two winners)

## Applerouth Tutoring Services

- ★ Case of wine!

## ArborBridge

- ★ 12-hour Test Preparation Program (to be used for ACT, SAT, or Subject Test prep)

## BestNotes.com

- ★ Bose Headphones

## Cialfo - College Guidance Platform

- ★ 6 months FREE access of the Cialfo platform with implementation and training support (two winners!)

## CollegePlannerPro.com

- ★ 6 Months Free of CollegePlannerPro

## College Essay Guy

- ★ Access to College Essay Guy's May intensive course for counselors: How to Create an Amazing College Application (Two winners!)

## College Success Plan

- ★ \$50 Gift Certificate

## College Supports for Learning Differences

- ★ \$100 Gift Card

## Compass Education Group

- ★ 9 Hours of In-home or Online Tutoring Sessions

## DreamCatcher Curriculum

- ★ Basic Sample Pack of College-Prep Curriculum

## Educational Consultant Platform

- ★ Texas-themed gift basket

## EssayDog.com

- ★ Every visitor who participates in a five-minute demonstration will qualify to win a 32-inch television!

## GuidedPath

- ★ Free registration for 1 of 6 popular GuidedPath Academy courses covering business, counseling, and technology (two winners!)

## Independent School Management (ISM)

- ★ iPad

## LanguageBird

- ★ Package of 6 tutoring sessions (any language, any level)

## Method Test Prep

- ★ 2 free seats to any upcoming Method Test Prep online course

## Next Step Youth Transport Services

- ★ \$100 Amazon Gift Card

## Online Behavior Analysis

- ★ Please stop by our table for your chance to win a free gift

## Prompt

- ★ Prompt Hoodie (three winners!)

## Rallyest

- ★ iPad
- ★ 1 Year Early Adopter Pricing (four winners!)

## Wintergreen Orchard House

- ★ 2018-2019 Hyperhandbook Download
- ★ 2018-2019 Four-Volume Bound set of CADS
- ★ Set of 4 Wall Maps
- ★ College Atlas and Planner (new 2017 edition)
- ★ The College Finder (new 2017 edition)

## YouScience

- ★ Come by the booth and register to receive a free gift!



# Conference Vendors

**Here in Austin  
our Vendor Hall  
will be located in  
Conference Central,  
Level 3**

## **Wednesday:**

8:00 a.m. – 6:00 p.m.

*Dedicated Vendor Hall Time:  
11:30 a.m. – 1:00 p.m.  
and 2:15 – 3:00 p.m.*

## **Thursday:**

7:00 a.m. – 6:00 p.m.

*Dedicated Vendor Hall Time:  
2:45 – 3:30 p.m.*

*Note: Some vendors are in  
the School & College Fair  
9:00 – 11:15 a.m.*

## **Friday:**

7:00 – 9:30 a.m.

*Note: Some vendors are in  
the Information Swap  
12:30 – 2:30 p.m.*

## **360 Planner**

360 Planner provides personalized, white label services such as financial aid, test prep, and admission calls to help IEC's expand their services and grow their business, along with a complete CRM to help IEC's effectively manage their business.

**Cindy Costley, 877-843-3305**

[Contact@360planner.com](mailto:Contact@360planner.com)  
[www.360planner.com](http://www.360planner.com)

## **American Institute of Certified Educational Planners (AICEP)**

AICEP awards qualified IECs the designation of Certified Educational Planner (CEP)<sup>™</sup>. Stop by our booth to learn why nearly 200 IECA Professional Members proudly hold the CEP credential. To learn more, please visit our website [www.aicep.org](http://www.aicep.org).

**Ann Chambers**

[info@aicep.org](mailto:info@aicep.org)  
[www.aicep.org](http://www.aicep.org)

## **Applerouth Tutoring Services**

The tests are standardized; our approach is anything but. Our tutoring process caters to each student's specific strengths, needs, and schedule. Our team of talented and motivated tutors have helped thousands of students gain acceptance to their top choice colleges. We build student success on a lifetime of expertise.

**866-789-PREP (7737)**

[info@applerouth.com](mailto:info@applerouth.com)  
[www.applerouth.com](http://www.applerouth.com)



## **ArborBridge**

ArborBridge is a first-class test preparation and tutoring firm that specializes in online, one-on-one programs. By combining our industry-leading adaptive curriculum with the experience and guidance of our elite tutors, students receive the most targeted and effective preparation possible.

**Kate Ballard-Rosa, 310-990-9852**

[kate@arborbridge.com](mailto:kate@arborbridge.com)  
[www.arborbridge.com](http://www.arborbridge.com)

## **BestNotes.com**

BestNotes is a powerful customer relationship tool that is paired with a HIPAA compliant electronic health record. Proudly serving IECA and NATSAP members since 2002; BestNotes is a comprehensive tool for schools, programs and independent educational consultants.

**Jon Winther, 855-489-1792**

[sales@bestnotes.com](mailto:sales@bestnotes.com)  
[www.bestnotes.com](http://www.bestnotes.com)

## **Cialfo – College Guidance Platform**

A one stop solution for growing IECs. Cialfo makes life easier: assign tasks and manage all students through one page. Our mobile app and natural interface grows student engagement. We transfer ALL existing data securely so you can hit the ground running.

**Rohan Pasari, 917-725-4098**

[rohan@cialfo.co](mailto:rohan@cialfo.co)  
[www.cialfo.co](http://www.cialfo.co)



# Conference Vendors

## CollegePlannerPro.com

An all-in-one software solution designed exclusively for independent educational consultants, CollegePlannerPro offers one intuitive place for consultants to manage their business, stay organized, and keep their students engaged and on track. IECA members receive a 25% discount on all subscriptions.

**Lisa Davis, 424-250-0396**  
[info@collegeplannerpro.com](mailto:info@collegeplannerpro.com)  
[www.collegeplannerpro.com](http://www.collegeplannerpro.com)

## College Essay Guy

College Essay Guy seeks to bring more ease, purpose, and joy into the college admissions process. How? Through online workshops for counselors and students, free resources, and by connecting volunteer counselors (like you!) with high-achieving low-income students via the Matchlighters program.

**Devon Sawyer**  
[Info@CollegeEssayGuy.com](mailto:Info@CollegeEssayGuy.com)  
[www.collegeessayguy.com](http://www.collegeessayguy.com)

## College Success Plan

Skype-based customized program teaches lifelong organization, planning, goal setting, accountability and time management skills to college students. Mentors Skype with students weekly and incorporate calendar planning, test taking, study strategies and cooperation with college-provided services. Reduced stress, increased confidence and better grades result.

**Elizabeth Pyle, 630-481-6153**  
[epyle@empowereducationgroup.com](mailto:epyle@empowereducationgroup.com)  
[CollegeSuccessPlan.com](http://CollegeSuccessPlan.com)

## College Supports for Learning Differences

Developed and operated by two IECs, Jill and Jordan Burstein, this site provides detailed information about learning supports for students at over 500 colleges and post-secondary programs.

**Jill Burstein, 847-940-8090**  
[Jill@collegesupports.com](mailto:Jill@collegesupports.com)  
[www.collegesupports.com](http://www.collegesupports.com)

## Compass Education Group

Compass provides the highest quality one-on-one test prep to students in-home in California and worldwide online. Our stellar reputation with the IEC community is the result of 25 years of ethical conduct and student success.

**Matt Steiner, 800-685-6986**  
[matt@compassprep.com](mailto:matt@compassprep.com)  
[compassprep.com](http://compassprep.com)



## DreamCatcher Curriculum

DreamCatcher Curriculum creates and designs engaging and informative college-prep materials in a range of critically-researched topics including financial aid/literacy, study skills, and college readiness. DreamCatcher products are affordable, age-appropriate, and ready to present to students middle school through college level.

**Aimee and Whitney, 479-419-8080**  
[hello@dreamcatchercurriculum.com](mailto:hello@dreamcatchercurriculum.com)  
[www.dreamcatchercurriculum.com](http://www.dreamcatchercurriculum.com)

## Educational Consultant Platform

Design|Brand|Print|Web

We offer IEC-specific designed websites, logos, marketing materials. Your marketing materials should perform like a sales force 24/7. Visit our booth for a free comprehensive web site SEO analysis.

**Bill & Kim, 877-888-7850**  
[partners@EducationalConsultantPlatform.com](mailto:partners@EducationalConsultantPlatform.com)  
[www.EducationalConsultantPlatform.com/ieca](http://www.EducationalConsultantPlatform.com/ieca)

## EssayDog.com

Empower your students with Hollywood screenwriting methodology to find their personal stories and authentic voice to create compelling application essays. EssayDog's new 2.0 version addresses the personal statement, the 'Why This College' and scholarship application essays.

**Teddy Barnes, 610-710-1617**  
[tbarnes@essaydog.com](mailto:tbarnes@essaydog.com)  
[www.essaydog.com](http://www.essaydog.com)



# Conference Vendors

## GuidedPath/PlanMyCollege

Looking for a better way to offer college planning? GuidedPath offers solutions tailored to your needs as a professional. Save money and spend more time with students using the unique five step guidance process built into GuidedPath. Stop by our table and enter our drawings for great prizes.



**Cyndy McDonald, 559-636-3605**

[cyndy@planmycollege.com](mailto:cyndy@planmycollege.com)  
[www.guidedpath.net](http://www.guidedpath.net)

## IECA Foundation

By leveraging the knowledge and professional skills of our members, and pooling funds provided by IECs, sponsors, and donors, The IECA Foundation supports those students who do not have the educational opportunities of our clients. Last year we funded over 32 organizations, each with noteworthy impact at the local and grassroots level. Please stop by our booth to learn about the amazing organizations your IECA Foundation supports.

**Karly Forman**

[kforman@iecafoundation.org](mailto:kforman@iecafoundation.org)  
[www.iecafoundation.org](http://www.iecafoundation.org)

## IECA Member Services

Visit the IECA Member Services table to discover how IECA gives you the tools you need to succeed. Current & prospective members will find a wealth of information and materials to benefit a successful practice. IECA members can enter a special prize drawing, pick up copies of the latest IECA publications, and complete a brief demonstration of the new website functionality, including tips for completing your online profile. If you are considering another level of membership or a new specialty designation, we are here to guide you. Are you a non-member independent educational consultant? Stop by and explore IECA membership—we would be happy to answer your questions.

**Amanda Fogler & Caitlin Myers, 703-591-4850**

[Amanda@IECAonline.com](mailto:Amanda@IECAonline.com)  
[www.iecaonline.com](http://www.iecaonline.com)

## Independent School Management (ISM)

ISM Insurance Inc. reaches over 7,000 private-independent schools, and serves over 200,000 students annually with personalized support and creative insurance solutions by combining extensive research and proven techniques. Coverages include: Domestic and international student policies, Directors and Officers, and comprehensive employee benefits.

**Jacqui Yamada, 302-656-4944**

[jacqui@isminc.com](mailto:jacqui@isminc.com)  
[www.isminc.com](http://www.isminc.com)

## LanguageBird

Take accredited, accelerated, live, 1-to-1, online foreign language courses via video chat. Students earn 1 year of high school foreign language credit with 24 private lessons. Students save time, get ahead, make-up or take courses their high school does not offer.

**Karyn Koven, 844-700-BIRD (2473)**

[drkoven@languagebird.com](mailto:drkoven@languagebird.com)  
[www.languagebird.com](http://www.languagebird.com)

## Method Test Prep

Method Test Prep partners with hundreds of schools and dozens of independent counselors to provide remarkably affordable, top-notch ACT/SAT prep. We look forward to consulting with you about how we can provide you with extra value to offer your clients.

**Frank McWilliams, 970-980-5887**

[frank@methodtestprep.com](mailto:frank@methodtestprep.com)  
[www.methodtestprep.com](http://www.methodtestprep.com)

## Next Step Youth Transport Services

A faith-based transport company head quartered in Texas with agents across the US. With 20+ years of experience our highly trained teams focus on de-escalation skills and calming techniques. We treat these kids as our own and have a huge success rate.

**Anji Maddox, 800-654-0065**

[www.nextstepyouthtransport.com](http://www.nextstepyouthtransport.com)  
[anji@nextstepyouthtransport.com](mailto:anji@nextstepyouthtransport.com)

## Online Behavior Analysis

Proactive assessment of social media and online behavior including an action plan to address areas of concern. Evaluations include: social media personas and applications, topics of conversation, friends, significant influencers, risk analysis of the digital footprint, potential criminal or illicit behavior, and Dark web search.

**John Schaeffer, 512-375-2220**

[info@onlinebehavioranalysis.com](mailto:info@onlinebehavioranalysis.com)  
[onlinebehavioranalysis.com](http://onlinebehavioranalysis.com)





# Conference Vendors

## Prompt

Prompt's software provides easy essay management – saving you hours per student. Get every essay for every student, tools to help students start writing, and a dashboard to manage drafts and reviews. Plus, Prompt's on-demand essay review can help you grow your business.

**Patrick Brown, 844-577-6678**

[patrick@prompt.com](mailto:patrick@prompt.com)  
[consultant.prompt.com](http://consultant.prompt.com)



## TestRocker, Inc.

Customized, online SAT and ACT prep that focuses on teaching and strengthening conceptual knowledge by providing on-demand expert instruction available anytime, anywhere. Features include: customized study plan, over 2,000 practice questions with video explanations and timed practice quizzes and tests.

**Michael Henry, 210-413-0570**

[michael@testrocker.com](mailto:michael@testrocker.com)  
[www.testrocker.com](http://www.testrocker.com)

## Rallyest

A mobile app that connects individuals during and after treatment with a "home team" of trusted therapists, family, and friends who can rally around them. Treatment providers rely on Rallyest to attract new clients, expand program awareness, increase client satisfaction, and strengthen their industry reputation.

**Melinda Carter, 801-319-0373**

[melinda.carter@rallyest.com](mailto:melinda.carter@rallyest.com)  
[www.rallyest.com](http://www.rallyest.com)



## UC San Diego Extension

The Education department at UC San Diego Extension provides integrated professional development for school communities and educational institutions while incorporating best practices and the latest research in content, pedagogy, andragogy, and administration.

**Education Department, 858-534-9286**

[unexeduc@ucsd.edu](mailto:unexeduc@ucsd.edu)  
<http://extension.ucsd.edu/education>

## Social Assurity LLC

Social Assurity delivers innovative social media strategies and instruction to college counselors for a clear advantage in student's college admissions. Their Network Program provides tools and information about actionable social media and online presence services for admissions and award decisions.

**Alan Katzman, (908) 342-2236**

[alan@socialassurity.com](mailto:alan@socialassurity.com)  
<https://socialassurity.com>

## Summit Educational Group

Since 1988, Summit has been the premier provider of standardized test preparation and academic subject tutoring in New England. Summit's One-on-One, In-Home and Online Tutoring programs bring a proven, personalized approach that is as unique as each student.

**1-800-MY TUTOR**

[info@mytutor.com](mailto:info@mytutor.com)  
[www.mytutor.com](http://www.mytutor.com)



## Wintergreen Orchard House

Publisher of reliable and comprehensive college admissions resources. Our data fuels CollegeXpress.com, a college search site for students, parents, and IECs. Stop by and ask about our special IECA members-only discounts!

**Colene Kennelly, 978-842-2785**

[ckennelly@carnegiecomm.com](mailto:ckennelly@carnegiecomm.com)  
[www.wintergreenorchardhouse.com](http://www.wintergreenorchardhouse.com)

## YouScience

A fun inspiring way to effectively and quickly engage in a college and career dialogue. Only YouScience captures real performance-based measures of aptitudes through brain games. Students get comprehensive career matching information, for career and school major exploration, and personalized self-advocacy language for applications and resumes.

**844-YOUCIENCE**

[partners@youscience.com](mailto:partners@youscience.com)  
[www.youscience.com](http://www.youscience.com)



7:30 a.m.			7:30 a.m.–7:00 p.m. <b>Conference Registration Open</b> <i>Conference Central, Lone Star Foyer, Level 3</i>	
8:00 a.m.				
8:30 a.m.	8:30–11:30 a.m. <b>Pre-Conference Workshops and Campus Tours</b> <i>see page 15 for workshop rooms</i>			
Lunch on your own				
1:00 p.m.	1:00–2:15 p.m. <b>Opening General Session with Keynote Speaker, Angela Maiers</b> <i>see page 48 for information Lone Star Salon D, Level 3</i>		8:00 a.m.–6:00 p.m. <b>Vendor Hall and Networking Lounge Open</b> <i>Conference Central, Lone Star Foyer, Level 3</i>	
2:15 p.m.	2:15–3:00 p.m. <b>Dedicated Vendor Hall Time</b> <i>Conference Central, Lone Star Foyer, Level 3</i>			
3:00 p.m.	3:00–4:15 p.m. <b>Breakout and Discussion Sessions (100 Series)</b> <i>see pages 50–51 for information</i>	3:00–5:30 p.m. <b>Master Class on the Opioid Crisis</b> <i>see page 48 for information Lone Star Salon D, Level 3</i>		
	4:30 p.m.			4:30–5:45 p.m. <b>Breakout and Discussion Sessions (200 Series)</b> <i>see pages 52–53 for information</i>
5:45 p.m.				5:45–7:15 p.m. <b>Hosted Receptions</b> <i>see page 13 for information Level 2</i>
6:00 p.m.	6:00–6:30 p.m. <b>New Attendee Orientation for School, College, and Therapeutic Program Representatives</b> <i>Room 307, Level 3</i>			
7:15 p.m.				

# Wednesday Events



## ☆☆ Keynote Speaker Choose2Matter

### Angela Maiers

Wednesday ☆ April 25 ☆ 1:00 p.m.

*Lone Star Salon D, Level 3*

When we think of people who made the biggest impact in our life, it was not their expertise or accomplishments that provided us with direction, guidance, and reassurance to accomplish our goals; it was their sincere belief in us. They let us know through their words and actions that we mattered. In Austin, **Angela Maiers** will discuss YOU MATTER. Her talk at TEDxDesMoines has been viewed over a half a million times and inspired Choose2Matter; a global movement that challenges and inspires students to work collaboratively to develop innovative solutions to social problems. Angela Maiers is a futurist and innovation expert, the founder of the Choose2Matter movement, and author of “Genius Matters” and “Classroom Habitudes: Teaching Habits and Attitudes for 21st Century Learning.”

*CE: 1 clock hour*



## ☆☆ Master Class Exploding Myths of Opioids and Marijuana

**Harold C. Urschel III, MD, MMA**

Wednesday ☆ April 25 ☆ 3:00 p.m.

*Lone Star Salon D, Level 3*

Dr. Urschel will explore solutions for our country's devastating opioid crisis. The discussion will include the latest scientific information for all opioid pain medications/heroin and describe the fundamental features and evidence-based treatment of opioid addiction.

**Harold C. Urschel III, MD, MMA**, is chief medical strategist at Enterhealth, and one of the country's foremost authorities on substance abuse and addiction. He wrote The New York Times bestseller, *Healing the Addicted Brain*.

*CE: 2.50 clock hours*





## 101 Supporting Women in STEM: Following The Trail Blazed by Hopper, Johnson, Villa-Komaroff, and Millions of Women

In the United States, women earn only about 35% of the undergraduate degrees in STEM, a number that has remained unchanged for the past decade even though women account for almost 60% of college graduates. As IECs, we have the opportunity to help support young women as they consider academic programs and colleges that match their interest in STEM professions.

*Smita Bakshi, zyBooks; Kate Biberdorf, University of Texas; Molly Gully, Vick Center for Strategic Advising and Career Counseling; Bob Carlton, IECA Associate*  
**Lone Star Salon A, Level 3**

*Track: C*  
*Target Content Level: Applied*  
*CE: 1.25 Clock Hours*

## 102 A Boarding School Challenge: Unpacking the 2e Student

This session will explore developing a profile for the twice exceptional student and for the schools that may serve them. 2e students present with both an area of giftedness and an area of challenge. The trick is striking a balance between supporting both the giftedness and the exceptionality. Schools tend to lean in one direction or the other. Serving both exceptionalities concurrently may require flexible programming. Understanding that this profile is complicated and asynchronous, we will develop a rubric of the 2e student profile. Then we will present case studies and work together to identify criteria that determines the best chance of success for the student. All experience levels are welcome.

*Helen Waldron, Oxford Academy; Audrey Ludemann, IECA*  
**Lone Star Salon B, Level 3**

*Tracks: L, S*  
*Target Content Level: Foundational*  
*CE: 1.25 Clock Hours*

## 103 How Much Essay Help Is Too Much? Practical Tools for Providing Ethical, Educational Feedback

You will be guided through an interactive workshop to answer two critical questions: 1) When are my values truly aligned with my behavior when it comes to helping students with their essays, and when are they not? 2) How can I ensure the feedback I provide is both ethical and educational? You'll develop greater awareness of your habitual impulses and

discover practical tools for offering actionable, educational feedback that helps your students become better writers, leading them to success in college and beyond. Warning: this session may provoke feelings of ambivalence, vulnerability, discomfort, affirmation, and empowerment.

*Brad Schiller, Prompt; Ethan Sawyer, IECA Associate*  
**Lone Star Salon C, Level 3**

*Track: C*  
*Target Content Level: Applied*  
*CE: 1.25 Clock Hours*

## 104 I'm a New IEC and Very Overwhelmed—Where Can I Go?

Many new IECs face challenges considerably different than their veteran colleagues. From wondering how much to charge their first client to finding the confidence to make the right decisions. New IECs often struggle with their first steps with little support and beginning their solo practice with few places to turn for answers and ideas. It doesn't have to be this way—walk away with resources and practical steps to begin a business practice with direction. Hear from other IECs who have recently walked in your shoes and learn from their journey.

*Brooke Daly, IECA Associate; Mark Cruver, IECA*  
**Room 302, Level 3**

*Track: B*  
*Target Content Level: Foundational*  
*CE: 1.25 Clock Hours*

## 105 Nonverbal Learning Disability: Exploring Controversy and Issues in Assessment, Placement, and Treatment

Confusion and controversy continue regarding Nonverbal Learning Disability (NVLD), particularly because NVLD is not included in the DSM-5 even though this disorder has a solid research base in neuropsychology. This presentation will describe the origins of NVLD, how this disorder is similar to and distinct from autism, and why understanding NVLD builds empathy and helps students and families move forward. We will also dig deeper and explore the issues in assessment, placement, and treatment from the psychologist, IEC, and therapist perspectives. We will use case studies and interactive discussion to focus on improving real-life outcomes.

*Tracine Smoot, PsychSolutions; Patti Hollenbeck Dial, Maple Lake Academy; Kathryn Meyer, IECA*  
**Room 303, Level 3**

*Tracks: L, T*  
*Target Content Level: Foundational*  
*CE: 1.25 Clock Hours*



## 106 Talent and Passion: the Value of Music Performance in College Admissions

How can we help orchestrate talented musicians to their best fit music program? What career paths and graduate school programs are open to students with a music performance degree? Today, it is very important for IECs to better understand why some students are passionate about music and why their families should not worry their child is destined to being a “starving artist.”

*Geoffrey Scott, Rice University;*  
*Kelly Ibarra, University of Houston;*  
*Sarah Borshard, University of Texas;*  
*David Best, IECA Associate*  
**Room 305, Level 3**

*Tracks: C, G*  
*Target Content Level: Foundational*  
*CE: 1.25 Clock Hours*

## 107 Remote Control: Best Practices for Running Your Remote Business

As clients start to come out of the woodwork from other parts of the country and abroad, how do you keep up? This session will focus on best practices in working with students and families remotely—both domestically and globally. The panel will feature seasoned IECs with expertise in working with international students, students in other parts of the US, and navigating the college admissions process with students who are away at boarding school. We will also explore marketing your business abroad, using different apps and tools, online test prep, and overcoming the obstacles that come without in-person interaction.

*Whitney Longworth and Drew Heilpern,*  
*Summit Educational Group; Don McMillan and*  
*Stephanie Klein Wassink, IECA*  
**Lone Star Salon F, Level 3**

*Tracks: B, I*  
*Target Content Level: Applied*  
*CE: 1.25 Clock Hours*

## 108 Money Matters from the Admissions World

Curious to learn how merit and scholarship aid is being used as a recruitment tool for admissions offices? This session, intended for beginners, will explore all things fiduciary in the admissions process. Come refresh your understanding of the terminology: need aware vs. need blind, meeting demonstrated need vs. gapping, net tuition revenue, discount rates, and the biggest conundrum currently facing the profession - the ability to pay vs. the willingness to pay for families.

*Sara Brookshire, Brandeis University;*  
*Charlie Leizear, Occidental College*  
**Lone Star Salon G, Level 3**

*Track: C*  
*Target Content Level: Foundational*  
*CE: 1.25 Clock Hours*

## 109 What is This Thing-a-ma-jiggy?

Some of the most dazzling spaces on school campuses are the Innovation and Design Centers. Laser-cutters, 3D printers, and an array of materials fill these bright, open spaces, but what are those tools and how are they used? A panel of directors of innovation labs and the founder of STEM 21 will show what these tools are, explain how they work, and describe how teachers across disciplines are integrating these resources into their curricula to deliver a deeper, more connected, and more meaningful learning experience for their students. In the end, participants will have a better understanding of both the tools and teaching strategies that make these spaces hum with the sound of student ingenuity.

*Curt Lewellen, The Fessenden School;*  
*Michael Mino, STEM 21;*  
*Sara Shifrin, Gould Academy;*  
*Allison Matlack, IECA*  
**Lone Star Salon H, Level 3**

*Track: S*  
*Target Content Level: Foundational*  
*CE: 1.25 Clock Hours*



## 201 Unpacking Demonstrated Interest in the Admissions Process

Holistic admissions in US college admission is sometimes neat and tidy. Mostly, it isn't. In this session, we'll explore the role that the sometimes mystical concept of "demonstrated interest" plays in the admission process, both from the perspective of the IEC and that of the admissions office. We'll also consider how to best discuss this topic with your students and their parents and we'll examine the schools that care—and don't—about this factor in terms of admitting students.

*Julia Pitassy, Trinity College;*  
*Arun Ponnusamy, Collegewise*  
**Lone Star Salon A, Level 3**

*Track: C*  
*Target Content Level: Foundational*  
*CE: 1.25 Clock Hours*

## 202 Are They Ready? Success Strategies in Autism Asperger Transition Programs. Working Early with Parents, Students, and Educators to Provide Support.

For many individuals on the autism spectrum and/or with learning differences, navigating the world after high school can be very daunting. In this interactive workshop, IECs will develop a deeper understanding of the key soft skills necessary for your student's success; self-advocacy, social skills, and executive functioning that can impact a young adult's future success in careers and academics. Presenters will discuss how to avoid invisible but obvious pitfalls. Specific strategies and creative approaches will be taught in an interactive manner providing the practical tools and skills necessary to support individuals with ASD/LD to excel in their desired academic field of choice.

*Sharona Sommer, College Internship Program;*  
*Carmen Tercilla, IECA*  
**Lone Star Salon B, Level 3**

*Tracks: C, L*  
*Target Content Level: Foundational*  
*CE: 1.25 Clock Hours*

## 203 Mastering the Supplemental Sections: ZeeMee, Essays, and More!

For college applicants, having a great traditional application (personal statement, grades, and test scores) simply isn't cutting it anymore. That's why so many students are focusing more on the supplemental parts of their applications: social media, essays, and other creative outlets. This session will provide an overview, case studies, and examples of application supplements, including essays, social media, and tools like ZeeMee. We will share how accepted students wrote in an authentic voice and used supplements effectively to show a college the person behind the application. In addition, we will provide insight from admissions officers to help you understand what makes a successful applicant.

*Will Powell, ZeeMee; Nina Berler, IECA*  
**Lone Star Salon C, Level 3**

*Track: C*  
*Target Content Level: Applied*  
*CE: 1.25 Clock Hours*

## 204 The Student You May Never Meet: Moving into Pure Digital Consulting

Some IECs may never have an in-person meet with the students with whom they work. This session will explore the problems and benefits of communicating with students in an increasingly digital age. Which platforms work best in assessing essays with students? Which platforms enable communication in certain regions? How does the landscape of helping students in China differ from that of the US? How does the process of communicating with parents change in this framework as well? These are just some of the many topics this panel will seek to address.

*Catherine Leary, School Placement Solutions;*  
*Caitlin Worsham, IECA Associate*  
**Room 302, Level 3**

*Tracks: B, I*  
*Target Content Level: Applied*  
*CE: 1.25 Clock Hours*

## 205 Not Just Pre-Med: Pathways to Canadian & American Medical Schools

Students don't know what they don't know about pathway programs into medical school, so they often default to "pre-med." Once they arrive at college and start exploring, they begin to discover other possibilities. What if we can start identifying those pathways before they enroll? Might their college choices be different? Might their high school classes be different? Might they consider alternative medical-related fields of study? This presentation explores academic and extracurricular options for students looking to eventually apply to a Canadian or American medical school.

*Laura Thompson, The University of British Columbia*  
**Room 303, Level 3**

*Tracks: C, G, I*

*Target Content Level: Foundational*  
*CE: 1.25 Clock Hours*

## 206 The Gap Year Advantage Today: Students, IECs & Gap Experts Tell All

Do you have students that might not be prepared to face four years of academic responsibility in order to succeed at university? Do you have high performing students that want to see more of the world before they dive into their rigorous academic future? Gap years are not for just one type of student—they can be beneficial for all different types of learners. Come hear different perspectives on taking a gap year and how IECs have worked with families to find the right program for their student. Gap alumni and their parents will explain how they benefitted from taking gap time, what they found the most challenging, and how it changed their path in life. Please come with questions for gap alumni and their parents!

*Ethan Knight, Gap Year Association;*  
*Alia Paltos, USA Gap Year Fairs;*  
*George Levesque, EF Gap Year*  
**Room 305, Level 3**

*Tracks: B, C, I, S*

*Target Content Level: Applied*  
*CE: 1.25 Clock Hours*

## 207 Using Data to Improve your Consulting and Admission Practices

The use of data to inform practice has become standard in healthcare, academics, human services, and other legitimate professions. Programs are using data to validate programming, track treatment progress, and demonstrate outcomes. IECs can use this data to inform their consulting practice. This presentation will focus on taking advantage of current data, actively participating in data collection, answering research

questions, and understanding the field better. This presentation will bring together processes regarding data collection, research practices, outcomes measurements, and program-IEC collaboration in fully utilizing data for the benefit of the client, the IEC, and the program.

*Brett Talbot, Discovery Academy;*  
*Steve DeMille, RedCliff Ascent;*  
*Mike Petree, Petree Consulting*  
**Lone Star Salon F, Level 3**

*Track: T*

*Target Content Level: Applied*  
*CE: 1.25 Clock Hours*

## 208 Least Restrictive Environment: Inclusion for All Learners in Private Education

Interest in private education has increased from families with students who have a diagnosis of a learning disability and/or ADHD. However, not all families want an LD specific school, instead opting for a more inclusive environment where students are educated among all types of learners. Many schools market learning support services, however, not all deliver. Identify programs that have proven success records is vital when recommending schools to families. Environmental modifications, areas for academic accommodation and modification, and potential barriers and best practices in the development of a neurodiverse learning environment will be explored.

*Kara Loftin, Wasatch Academy; Bill Flynn, Hebron Academy*  
**Lone Star Salon G, Level 3**

*Tracks: L, S*

*Target Content Level: Applied*  
*CE: 1.25 Clock Hours*

## 209 Junior Boarding School: The Road Less Traveled That Can Make All the Difference.

Learn more about junior boarding schools from professionals at three of the ten Junior Boarding School Association (JBSA) member schools. Attendees will come away with a better understanding of the transformation of "the whole child" that can take place at the middle school level. IECs and admissions representatives will engage in a discussion about the approach of junior boarding schools and how they prepare students for more independent success in high school and beyond. Discover how a "stop off the beaten path" before secondary school could make all the difference for a student and their families.

*Jessica Bayreuther and*  
*Jarrod Caprow, Cardigan Mountain School; John Seaward,*  
*Rectory School;*  
*Ben Tuff, Rumsey Hall School; Kristen Naspo, IECA*  
**Lone Star Salon H, Level 3**

*Track: S*

*Target Content Level: Foundational*  
*CE: 1.25 Clock Hours*



7:00 a.m.		7:00–8:30 a.m. <b>Continental Breakfast</b> <i>Conference Central, Lone Star Foyer, Level 3</i> (seating in Lone Star Salon E)	7:00 a.m.–6:00 p.m. <b>Vendor Hall and Networking Lounge Open</b> <i>Conference Central, Lone Star Foyer, Level 3</i>	7:00 a.m.–7:00 p.m. <b>Conference Registration Open</b> <i>Conference Central, Lone Star Foyer, Level 3</i>
7:30 a.m.	7:30–9:00 a.m. <b>Consultant Roundtables</b> All Specialties: for member and non-member consultants only <i>see page 62 for topics</i> <i>Lone Star Salon D, Level 3</i>			7:30–8:00 a.m. <b>Guided Meditation</b> <i>Room 307, Level 3</i>
8:15 a.m.		8:15–9:00 a.m. <b>Set Up for College &amp; School Fair</b> <i>Griffin Hall, Level 2</i>		
9:00 a.m.	9:00–11:15 a.m. <b>School &amp; College Fair</b> <i>Griffin Hall, Level 2</i>			
9:30 a.m.		9:30–10:30 a.m. <b>Therapeutic Community Discussions</b> <i>see page 63 for topics</i> <i>Lone Star Salon D, Level 3</i>		
10:30 a.m.	10:30–11:15 a.m. <b>School &amp; College Fair Welcomes Therapeutic Schools and Programs</b> <i>Griffin Hall, Level 2</i>			
11:15 a.m.	11:15 a.m.–12:15 p.m. <b>IECA Community Forums: College, School, and Therapeutic</b> for IECA member consultants only <i>see page 11 for information—Level 3</i>			
12:15 p.m.	12:15–1:30 p.m. <b>Lunch</b> <b>Presentation by Denison University President at 12:30 p.m.</b> <b>followed by Steven R. Antonoff Award presentation</b> <i>see pages 60-61 Lone Star Salon D, Level 3</i>			
1:00 p.m.				
1:30 p.m.	1:30 – 2:45 p.m. <b>Breakout and Discussion Sessions (300 Series)</b> <i>see pages 64–65 for information</i>			
2:45 p.m.	2:45–3:30 p.m. <b>Dedicated Vendor Hall Time</b> <i>Conference Central, Lone Star Foyer, Level 3</i>			
3:30 p.m.	3:30–4:45 p.m. <b>Breakout and Discussion Sessions (400 Series)</b> <i>see pages 66–67 for information</i>			
5:00 p.m.	5:00–6:00 p.m. <b>IECA Community Forums: Global, Graduate School, and LD</b> for IECA member consultants only <i>see page 11 for information—Level 3</i>	5:00–6:00 p.m. <b>Affinity Group Gatherings</b> for IECA member consultants only <i>see page 12 for information—Level 3</i>	4:45–6:00 p.m. <b>Hosted Receptions</b> <i>see page 13 for information</i> <i>Level 2</i>	5:00–6:00 p.m. <b>Friends of Bill W</b> <i>Room 307, Level 3</i>
6:00 p.m.	6:00–7:00 p.m. <b>IECA Networking Reception</b> <i>Lone Star Salon D, Level 3</i>			
7:00 p.m.			7:00 p.m. <b>Hosted Receptions</b> <i>see page 13 for information—Level 2</i>	

# Thursday Events



## ☆☆ Featured Speaker Disrupting the Admissions Process

### Adam Weinberg

Thursday ☆ April 26 ☆ 12:30 p.m.

Lone Star Salon D, Level 3

How might colleges, high schools, and college IECs partner in new ways to reimagine the college admissions process to reduce stress and anxiety, while also sending the right signals to high school students about how to best prepare for college and how to find a college that is the right fit?

**Adam Weinberg** became the president of Denison University in 2013. He began his career at Colgate University in the sociology department and served as vice president and dean. Prior to Denison, he served as president and CEO of World Learning.

*CE: 0.25 Clock Hour*



Thursday ☆ 6:00 – 7:00 p.m.

Lone Star Salon D, Level 3

## IECA Networking Event: Barbecue, Bluegrass, and Brews

*(for all fully registered conference attendees)*

Austin may be one of Texas's most modern and cosmopolitan cities, but we'll celebrate the entire state's history as we gather for our networking celebration Thursday night. So grab your **B**oots, **B**uddies, and fellow **B**uckaroos and enjoy a **B**onanza of Texas **B**BQ, **B**everages (including Texas state **B**rews) and some local music. After all, Austin is known as the live music capital of the United States.

## Menu for the Networking Reception

### ATX BBQ & Bluegrass

- Local Pecan Smoked Beef Brisket | Cowboy Slaw | Rolls
- House Pickles | Sliced Spanish Onions
- JW's Barbeque Sauce
- Vegetarian Baked Beans
- Jalapeño Cornbread Poppers
- Chipotle marinated Tomato | Avocado | Sweet Corn Salad
- Charred Lime | Chili & Chive Dressing

### Frito Pie Stand

- Crunchy Corn Chips eaten right from the bag topped with your choice
- Texas Red Chili
- Vegan Lentil Chili
- Sour Cream | Scallions | Candied Jalapeños | Shredded Cheese Blend
- JW's famous SXSU Queso | Pickled Green Tomatoes | Red Onions | Black Beans
- Pico de Gallo

### Carved Butcher Block

- Brick Grilled Semi Boneless Chicken | Rosemary & Red Chili Marinade
- Andouille Sausage | Red Bean Rice
- Thyme & Pancetta Roasted Portabello Mushrooms
- Marinated Olives

### Beverages

- Your first beer, wine, or soft drink is on us.  
Your IECA badge will serve as your drink ticket.

*This event is included in your conference registration at no additional cost.*

PRESENTATION DURING THURSDAY LUNCH  
12:15-1:30 P.M.  
(PRESENTATION AT 12:45 P.M.)  
IN LONE STAR SALON D, LEVEL 3

## STEVEN R. ANTONOFF AWARD FOR PROFESSIONAL ACHIEVEMENT



### 2018 AWARDEE: JUDY BERG

Judy began her career as an independent educational consultant (IEC) in 1986 and joined IECA in 1989. In what began as an organization of just 100 IECs nationally, she enjoyed the opportunity to connect with colleagues. As IECA grew, so did Judy's involvement. She chaired the College Committee and joined the board as vice president. She became president in 1996, and during her tenure, the American Institute of Certified Educational Planners and the IECA Foundation were both established.

Over the years, she continued her involvement with IECA, serving on many committees and task forces. One highlight was her participation on the NACAC Ethics Committee, which gave her the opportunity to share the student perspective when institutional issues were raised. After the IECA Foundation was launched, she gave it her full attention, becoming board chair and continuing to serve on the board to this day. She looks with pride on how IECA has been able to expand its reach to so many more students through the Foundation and the incredible volunteer work of its members. Judy has always sought to further the level of conversation with college admission officials by encouraging discussion

of issues of mutual concern. She was therefore delighted to organize IECA's first College Symposium for IECA members in 2015. Throughout her tenure, she has led sessions at IECA conferences, taught at training sessions, and held workshops for IECs on counseling issues.

Although Judy has recently retired, she still connects with colleagues at meetings, holds seminars, and works with pro bono students. She reflects fondly on the opportunity she has had to guide students during such an important juncture in their lives and to be part of a national organization that enhances and supports the profession. Helping to provide perspective and open a path for students has been among the most rewarding aspects of her long career. She looks back with pride on what IECA founders did to create this profession and what present IECA members are doing to keep it current and relevant. In her retirement, Judy is exploring her other passion: social justice. Through her work with the Commission on Social Action in Washington, DC, she works to help repair our broken world. She also relishes the extra time with her family the most, especially her five very special grandchildren.



## 301 International Admission in 2018

With dramatic increases in applications from international students over the past decade, how are highly selective US colleges and universities choosing among talented international applicants? Learn about current trends in international enrollment, the use (and mis-use!) of standardized tests, language exams for international students, and how third-party interviews can give students an edge in the admission process. We will also discuss how international students can pursue financial assistance and how seeking international aid can change the admission process at many institutions.

*Charlie Leizear, Occidental College;*  
*Sara Brookshire, Brandeis University*  
**Lone Star Salon A, Level 3**

*Tracks: C, I*  
*Target Content Level: Foundational*  
*CE: 1.25 Clock Hours*

## 302 The IEC's Guide to Autism Spectrum Disorder

This session will provide the most recent Autism Spectrum Disorder (ASD) education, training, and tools to design effective methods to advocate, coach, and partner with families of young adults with higher functioning Autism Spectrum Disorder (hfASD). Often children who present with social oddities, despite average to superior intelligence, receive a late diagnosis of hfASD. Ongoing challenges with verbal and nonverbal social communication during teenage years into their adult years can indicate an additional mental health issue. This session will provide a thorough understanding of how young adults with hfASD see and interpret social communication to include the most effective ASD interventions and strategies.

*Christine Rans, Rose Hill Center*  
**Lone Star Salon B, Level 3**

*Track: L*  
*Target Content Level: Applied*  
*CE: 1.25 Clock Hours*

## 303 When the Interview Counts: Preparing Students to Succeed

An experienced IECA member will lead the panel reflecting on the role of an IEC preparing students for interviews. Attendees will hear from a college dean of admission and a prep school admissions director on how their institutions use interviews in this changing landscape to differentiate candidates: what candidates can expect to encounter, criteria used to evaluate candidates, and the do's and don'ts for successful preparation. An interview coach will provide strategies to help students select stories representing relevant achievements with worksheets that IECs can employ to support an authentic interview presentation.

*Mark Efinger, Interview Skill Coaching Academy;*  
*Peter Gilbert, Salisbury School;*  
*Amy Markham, Mt. Holyoke College*  
**Lone Star Salon C, Level 3**

*Tracks: C, G, S*  
*Target Content Level: Foundational*  
*CE: 1.25 Clock Hours*

## 304 The North American Boarding Initiative: Spring Campaign Update

At a time of significant changes and expanding choice on the education landscape, enrollment challenges for boarding schools have grown more complex. The North American Boarding Initiative (NABI) was created to respond to the challenges with a multimillion-dollar, five-year initiative funded by 215 member schools to grow demand for pre-prep and college-prep boarding schools among families in the US and Canada, and to raise awareness of the lifelong difference a 24/7 educational experience offers students. This real-time update of the campaign will include: the performance of digital channels to reach a niche audience in the US and Canada; what messages are resonating with parents and students; and how we are partnering with IECs to help consumers who are considering boarding school.

*Megan Cartier, TABS*  
**Room 302, Level 3**

*Track: S*  
*Target Content Level: Applied*  
*CE: Not eligible*



### **305 Legal Considerations When Growing Your Team**

Working with others is a powerful way to grow your business, but it is also fraught with risk and challenges. Do you know, and follow, laws regulating employee versus independent contractor classifications? Wage and hour laws? Do you make use of easy ways to protect your business, like non-competition and confidentiality agreements? Have you given careful thought to how you can structure your practice to attract the right people and create the right incentives, for example, legally compliant compensation structures? This session will provide an overview of these important considerations, from the perspectives of an employment attorney and the owner of a college counseling and test preparation company.

*Krista Sterken, Exact Sciences; Zach Galin, IECA*  
**Room 303, Level 3**

*Track: B*  
*Target Content Level: Applied*  
*CE: 1.25 Clock Hours*

### **306 A Retrospective of the Therapeutic Journey from IEC to Wilderness, Residential Treatment, and Adulthood**

Ten years after completing treatment related to her Bipolar Disorder, Katy is a young adult navigating the realities of working, parenting, relationships, and continuing to manage her mental health issues. Katy and her parents will provide a retrospective of their experience from the initial meeting with an IEC through wilderness therapy and residential treatment. They will discuss the highs and lows of their experiences, the importance of smooth transitions, the value of parent involvement, and how they have applied their learnings over the last 10 years. The discussion will be facilitated by their wilderness and residential treatment therapists, and will also include input from their IEC.

*Courtney Merrill and Madhuri Barefoot,*  
*True North Wilderness Program*  
**Room 305, Level 3**

*Track: T*  
*Target Content Level: Applied*  
*CE: 1.25 Clock Hours*

### **307 Screens, Teens, the Problem It Seems? Current Understanding of Adolescent Technology Abuse**

Presenters will discuss current trends and objective data surrounding mental health and screen use addiction patterns in adolescents and young adults. The presentation will clarify common presenting problems and resources parents and referring professionals request when seeking assistance from treatment professionals. We will focus on intervention and

treatment modes that are helpful in treating screen addictions in contrast and comparison to other substance use or addiction treatment modalities. Discussion and collaboration will be encouraged.

*Blake Smith, Trails Momentum; Daniel Fishburn, Montford Hall*  
**Lone Star Salon F, Level 3**

*Track: T*  
*Target Content Level: Applied*  
*CE: 1.25 Clock Hours*

### **308 Improving Admissions Essays: Writing Interventions for Individuals with Learning Differences**

Learning disabilities are often referred to as “invisible disabilities” because they generally aren’t evident unless an individual discloses them. IECs need to be able to identify common problems that students with LD face within the writing process and to have a toolbox of strategies to assist students in overcoming those barriers. This session will explore writing interventions for young adults with LD for all phases of the writing process. Participants will leave with tools that can be applied immediately in their practice.

*Hattie Linam, College Living Experience*  
**Lone Star Salon G, Level 3**

*Tracks: C, L*  
*Target Content Level: Foundational*  
*CE: 1.25 Clock Hours*

### **309 Managing a Full Senior Caseload (Without Losing Your Mind)**

Even in a perfect world, application season is stressful. When you throw in last-minute essays edits, college lists that won’t stay “final,” and students who treat appointment times like suggestions, all while juggling a full caseload of seniors—it’s enough to drive even the most patient IECs crazy. This session will provide tips, tricks, and best practices to help your students move through a thoughtful application process without sacrificing the quality of your work (or your life!). We’ll tackle practical tools and actions that will help you make your families happier and, in turn, grow your business.

*Allison Lopour, IECA Associate*  
**Lone Star Salon H, Level 3**

*Tracks: B, C*  
*Target Content Level: Applied*  
*CE: 1.25 Clock Hours*



## 401 Advocating a Model of Learning Diversity

Prevailing models of learning disability rely heavily on unexamined assumptions about learning. This workshop offers participants opportunities to explore the learning diversity model as an alternative to traditional learning disability models. Consideration is given to three fundamental assumptions on which traditional models of learning disability depend. An interactive demonstration will allow participants to explore and develop a deeper understanding of the pitfalls of traditional models of learning disability, and the presenters will make a case for an alternative set of assumptions on which the learning diversity model can be built to provide equitable access to education for all students.

*Michael Riendeau and Matthew Kim, Eagle Hill School*  
**Lone Star Salon A, Level 3**

*Tracks: L, S*

*Target Content Level: Applied*

*CE: 1.25 Clock Hours*

## 402 Get A Life! How to Navigate Work-Life Balance

If the first thing you do when you wake up in the morning is check your email, this is the panel for you! Working nontraditional hours and having clients with their own work-life balance challenges can lead to a slippery slope when it comes to your own personal time. Feeling like you are on call 24/7 can lead to serious burnout, but learning to say no can be difficult. Join our panelists to discuss how they have found ways to navigate work-life balance and combat stress through organization, setting boundaries, and mindfulness. This conversation will help attendees find ways to balance personal time without sacrificing at the expense of their businesses.

*Charlie O'Hearn, Summit Educational Group;*  
*Allison Matlack, IECA; Mark Sklarow, IECA CEO*  
**Lone Star Salon B, Level 3**

*Track: B*

*Target Content Level: Foundational*

*CE: 1.25 Clock Hours*

## 403 Not the Common APPLICANT-How to Support International Students During the Application and Enrollment Process

This session gives IECs the necessary foundational skills and basic knowledge to more effectively counsel and advise international students pursuing undergraduate study in the US. A balance of professional information will be provided, as well as direct interaction with currently enrolled international students at a local university. Topics to include: international student enrollment trends and industry challenges, tips on working with international students and families, standardized testing, and financial concerns.

*Amy Kice, St. Edward's University*  
**Lone Star Salon C, Level 3**

*Tracks: C, I*

*Target Content Level: Applied*

*CE: 1.25 Clock Hours*

## 404 Balancing the Art and Science of Psychological Evaluations

When a student is referred for a psychological evaluation, parents are often in a state of crisis or are contemplating a major transition. There is sometimes conflict about how best to move forward. This session will focus on how a psychological evaluation can go beyond diagnosis and provide momentum for the next steps. We will begin with an overview of the current science of psychological evaluations. We will then delve into the art: building trust, ensuring the parents and their child are seen and heard, and 'telling the story.' Finally, we will discuss how the psychologist and treatment team, together, can provide meaningful feedback for the student and the family, which can be transformative.

*Tracine Smoot and Jennifer Brown, PsychSolutions;*  
*Aaron Wallis, Open Sky Wilderness*  
**Room 302, Level 3**

*Tracks: B, L, T*

*Target Content Level: Applied*

*CE: 1.25 Clock Hours*

## 405 The Other Side of the Desk: Application Review in the Digital Age

For many applicants (not to mention counselors, parents, and IECs), the application review process can seem like a black box. As college admission committees are increasingly moving to committee-based evaluation and seem to be looking for non-traditional predictors of college success, things are certainly changing. In this session we will walk several applications through the review process, getting an inside look at the other side of the desk. For fans of Schoolhouse Rock, think "I'm Just a Bill."

*Mary Chobanian Aguirre, Dickinson College;*  
*Elisabeth Morgan, IECA*  
**Room 303, Level 3**

Track: C  
Target Content Level: Applied  
CE: 1.25 Clock Hours

## 406 Two Steps Forward, One Step Back: Best Practices Surrounding Transition and Family Regression as the Opportunity in Treatment

This panel discussion will address the necessity of a transitional component to the treatment process with adolescents and parents; anticipated and essential regression pitfalls with families; how to work within, and not avoid, the regressions in real world transition; facilitate treatment as a process not a cure; and provide essential tools and resources toward best practices in treatment. We will discuss the skills families need to navigate transition and aftercare, as well as how IECs are treatment team members from the very beginning of the process.

*Tim Corson, Montana Academy; Tony Mosier, Telos RTC;*  
*Teri Solocheck, IECA*  
**Room 305, Level 3**

Track: T  
Target Content Level: Applied  
CE: 1.25 Clock Hours

## 407 True Insight: Using UC and UT Essays for College Readiness, Admissions, and Success

In the past two years, the University of California and University of Texas-Austin have introduced new essay prompts that include shorter, more focused prompts. This session will propose ways to use the prompts for college readiness not just admissions. The prompts truly help students think about how to shape their high school years to develop authentic academic,

extracurricular, and service passions. We will suggest ways to integrate prompts into our practices and how to help students write the most specific, effective responses. We will show sample essays and evolving resumes.

*Rebecca Joseph, Elizabeth Stone, and Catherine Marrs, IECA*  
**Lone Star Salon F, Level 3**

Track: C  
Target Content Level: Foundational  
CE: 1.25 Clock Hours

## 408 Young Adult Confidentiality: Ethics and Best Practices

Working with a young adult population requires careful navigation of confidentiality. Often therapists, IECs, and programs find themselves walking a fine line when balancing rapport and buy-in with the entire family, while also helping establish autonomy and boundaries. We will explore the ethics and challenges of maintaining confidentiality with young adult clients and their families. We will also discuss the role confidentiality plays in establishing autonomy while creating connection, boundaries, and a commitment to treatment within the family system.

*Josh White, Red Mountain Sedona; Jesse Quam, IECA*  
**Lone Star Salon G, Level 3**

Tracks: B, T  
Target Content Level: Foundational  
CE: 1.25 Clock Hours

## 409 Decisions, Decisions: Insight into the 2018 Admissions Cycle

As in the past, many factors were at play in the 2018 admissions cycle. This year was marked by an increase in applications, shifting institutional needs, changes to application plans among colleges and universities, demographic changes in the applicant pool, a broader use of competing applications, new decision-making processes within some admissions teams, and increased competition among "elite" colleges. Seeking insight into this year's admissions cycle, we have invited a panel of admissions professionals to relay their colleges' experiences, strategies, and outcomes.

*Katie Frink; Rhodes College; Radia Alouache;*  
*Loyola Marymount University; Alex Muñoz, SMU;*  
*Julia Pitassy, Trinity College;*  
*Charlie Leizear, Occidental College;*  
*Lisa Carlton and Ann Rossbach, IECA*  
**Lone Star Salon H, Level 3**

Track: C  
Target Content Level: Applied  
CE: 1.25 Clock Hours

# School & College Fair

Your Key Opportunities  
to Make Connections

## Thursday's School & College Fair:

9:00-11:15 a.m.

Griffin Hall | Level 2

CE: 2.25 clock hours *(for IECs only)*

### Participants include:

- ★ Colleges/universities
- ★ Traditional day/boarding schools
- ★ Gap year and travel programs (non-therapeutic)
- ★ LD-focused schools and programs
- ★ Post-secondary LD programs
- ★ Vendors and related service companies (i.e. publishers, software, finance)
- ★ IECs who work with these institutions

## Special Fair Time for Program Reps

10:30-11:15 a.m.

During the final 45 minutes of the independent educational consultants portion, we will invite representatives of therapeutic schools and programs to visit the Thursday Fair. This will allow for great school-to-school networking, increasing the ROI for all participating schools.

## Finding a Specific Institution

An alphabetical list of all institutions participating in the School & College Fair begins on page 70. A listing of all conference participants starts on page 93.

At the Fair, Colleges can be identified by light blue table signs; Schools by white table signs; Gap year/travel programs by bright blue signs; LD schools by light green signs; Post-secondary LD by bright green signs; Vendors & related services by orange signs.





# School & College Fair

**Thursday ☆ April 26 ☆ 9:00–11:15 a.m.**

**Griffin Hall on Level 2 of the JW Marriott Austin**

*(see supplement for those registered after April 4, 2018)*

**All institutions in the Fair room are organized alphabetically by school/company name, within the sections listed below in the first column.**

Participants include: Colleges & Universities; Traditional Day & Boarding Schools; Gap Year/Travel Programs, LD-Focused Schools & Programs, Post-Secondary LD Programs; Vendors and Related Service Companies

*The Friday Information Swap participant list can be found on page 86.*

Section of Thursday Fair	Name of Institution/Company	Location
Related Service (Vendor)	360 Planner	Simi Valley, CA
Gap Year/Travel Program	Academic Programs International	Texas
LD	Academy at SOAR	North Carolina
College/University	Albion College	Michigan
School	American Hebrew Academy	North Carolina
College/University	American University	Washington, DC
College/University	The American University of Paris	Paris, France
Related Service (Vendor)	Applerouth Tutoring Services	Atlanta, GA
School	Asheville School	North Carolina
College/University	Augsburg College	Minnesota
College/University	Austin College	Texas
College/University	Bard College	New York
College/University	Baylor University	Texas
College/University	Beacon College	Florida
School	The Bement School	Massachusetts
LD PostSecondary	Berkshire Hills Music Academy	Massachusetts
School	Besant Hill School	California
School	Bishop's College School	Quebec, Canada
Related Service	Bloom Consulting	Texas
School	Blue Ridge School	Virginia
College/University	Brandeis University	Waltham, MA
School	Brandon Hall School	Atlanta, GA
LD	Brehm Preparatory School	Carbondale, IL
School	Brewster Academy	New Hampshire
School	Buxton School	Massachusetts
College/University	California Institute of the Arts	California
LD	Camp Kodiak	Ontario
School	Canterbury School	Connecticut
School	Cardigan Mountain School	New Hampshire
College/University	Champlain College	Vermont
School	Chapel Hill-Chauncy Hall School	Massachusetts
Related Service (Vendor)	Cialfo - College Guidance Platform	Singapore
College/University	Clarkson School	New York
Related Service (Vendor)	College Essay Guy	Los Angeles, CA
LD PostSecondary	College Excel	Bend, OR
LD PostSecondary	The College Experience	New York
College/University	College for Creative Studies	Detroit, MI
LD PostSecondary	College Internship Program (CIP)	Massachusetts



# Tables by Institution

Section of Thursday Fair	Name of Institution/Company	Location
LD PostSecondary	College Living Experience	6 centers - 5 states
College/University	College of Charleston	South Carolina
College/University	The College of Wooster	Ohio
LD PostSecondary	College Prog for Students w/Autism Spectrum Dis-Marshall U.	West Virginia
Related Service (Vendor)	College Success Plan	Hinsdale, IL
College/University	Colleges That Change Lives	California
College/University	Cornell College	Iowa
School	Cranbrook Schools	Michigan
School	Culver Academies	Indiana
College/University	Curry College	Massachusetts
School	Cushing Academy	Massachusetts
School	Darrow School	New York
School	Davidson Academy	Nevada
College/University	Denison University	Ohio
LD	Devereux Glenholme School	Connecticut
College/University	Dickinson College	Carlisle, PA
School	Dublin School	New Hampshire
School	Dunn School	California
Gap Year/Travel Program	Dynamy Internship Year	Worcester, MA
LD	Eagle Hill School	Massachusetts
School	Eaglebrook School	Massachusetts
College/University	Earlham College	Indiana
Related Service (Vendor)	Educational Consultant Platform	Virginia
School	EF Academy New York	New York
Gap Year/Travel Program	EF Gap Year	Massachusetts
Gap Year/Travel Program	EF International Language Campuses	Cambridge, MA
College/University	Elon University	North Carolina
School	The Enrollment Management Association	Skillman, NJ
Related Service (Vendor)	EssayDog	Montvale, NJ
School	EXPLO	MA & CT
School	Fay School	Southborough, MA
School	The Fessenden School	Massachusetts
LD	FlexSchool	CT and NJ
College/University	Florida Institute of Technology	Florida
College/University	Florida Southern College	Florida
LD	Forman School	Connecticut
School	Foxcroft School	Virginia
College/University	Franklin University Switzerland	Lugano, Switz.
School	Fusion Academy	Nationwide
LD PostSecondary	GAP Year at SOAR	North Carolina
School	George Stevens Academy	Maine
College/University	Goucher College	Baltimore, MD
LD	The Gow School	South Wales, NY
LD	Grand River Academy	Ohio
LD	The Greenwood School	Vermont
Related Service	Grown and Flown	New York
Related Service (Vendor)	GuidedPath/PlanMyCollege	California
School	The Gunnery	Connecticut
LD	Hampshire Country School	New Hampshire
School	Hebron Academy	Maine
College/University	High Point University	North Carolina
School	The Hill School	Pennsylvania

# School & College Fair

Section of Thursday Fair	Name of Institution/Company	Location
School	Hillside School	Massachusetts
School	The Hockaday School	Dallas, TX
School	Holderness School	New Hampshire
School	Hoosac School	New York
LD PostSecondary	The Horizons School	Birmingham, AL
School	The Hun School of Princeton	New Jersey
School	Hyde School	Maine
Related Service (Vendor)	IECA Foundation	Fairfax, VA
LD PostSecondary	Independence Center	Los Angeles, CA
Related Service (Vendor)	Independent School Management	Wilmington, DE
School	Indian Mountain School	Connecticut
Gap Year/Travel Program	InnerPathWorks	Idaho
College/University	Jacksonville University	Jacksonville, FL
College/University	John Cabot University	Rome, Italy
College/University	Johnson & Wales University	RI, NC, FL, CO
College/University	Kalamazoo College	Michigan
College/University	Keele University	England
School	Kent School	Connecticut
LD	The Kildonan School	New York
School	Kimball Union Academy	New Hampshire
College/University	Knox College	Galesburg, IL
School	The Knox School	St. James, NY
School	Lake Forest Academy	Illinois
College/University	Lake Superior State University	Michigan
College/University	Landmark College	Vermont
LD	Landmark School	Massachusetts
Related Service (Vendor)	LanguageBird	Online
Gap Year/Travel Program	Launch Generation	San Diego, CA
Related Service	LaunchPad Education	Online
School	Laurel Springs School	Online
College/University	Lawrence University	Appleton, WI
LD	The Leelanau School	Michigan
LD PostSecondary	Life Development Institute	Arizona
Related Service	LifeStream Digital Innovations, LLC	New York
College/University	Long Island University	New York City
College/University	Loyola Marymount	Los Angeles
College/University	Lynn University	Florida
LD PostSecondary	Mansfield Hall	VT and WI
LD	Maplebrook School	New York
LD PostSecondary	Marbridge Foundation	Texas
School	Marianapolis Preparatory School	Connecticut
College/University	Marquette University	Wisconsin
School	The Marvelwood School	Connecticut
College/University	Massachusetts College of Art and Design	Boston, MA
College/University	Massachusetts College of Pharmacy and Health Sciences	Massachusetts
College/University	Massachusetts Maritime Academy	Massachusetts
Related Service (Vendor)	Method Test Prep	Plainview, NY
LD	Middlebridge School	Rhode Island
School	Midland School	Central Coast CA
School	Millbrook School	New York
School	Miss Porter's School	Connecticut
College/University	Mount Holyoke College	Massachusetts

# Tables by Institution

Section of Thursday Fair	Name of Institution/Company	Location
College/University	Muskingum University PLUS Program	Ohio
College/University	Naropa University	Colorado
College/University	New College of Florida	Sarasota, FL
School	Nord Anglia Education	New York
School	North Broward Preparatory School	Florida
School	North Country School	New York
College/University	Occidental College	Los Angeles, CA
College/University	Ohio Wesleyan University	Ohio
School	Oldfields School	Maryland
Related Service (Vendor)	Online Behavior Analysis	Austin, TX
Gap Year/Travel Program	The Outdoor Academy	North Carolina
LD	The Oxford Academy	Connecticut
LD PostSecondary	P.A.C.E. at National Louis University	Chicago, IL
College/University	Pine Manor College	Massachusetts
School	Pomfret School	Connecticut
School	Proctor Academy	New Hampshire
Related Service (Vendor)	Prompt	New York City
School	The Putney School	Vermont
College/University	Quinnipiac University	Connecticut
LD PostSecondary	Rainbow Acres	Arizona
Related Service (Vendor)	Rallyest	Alpine, UT
School	Rectory School	Connecticut
School	Ridley College	Ontario
LD	Riverview School	Massachusetts
School	Rock Point School	Vermont
School	Ross School	New York
School	Rumsey Hall School	Connecticut
Gap Year/Travel Program	Rustic Pathways	Ohio
College/University	Sacred Heart University	Connecticut
School	St. Andrew's School	Rhode Island
College/University	St. Edward's University	Austin
School	Saint James School	Maryland
College/University	St. John's College	NM and MD
School	St. Johnsbury Academy	Vermont
School	St. Margaret's School	Virginia
School	Saint Stanislaus	Mississippi
School	St. Stephen's Episcopal School	Texas
School	St. Thomas More School	Connecticut
School	St. Timothy's School	Maryland
School	Salisbury School	Connecticut
School	San Domenico School	California
School	San Marcos Academy	Texas
School	Scattergood Friends School	Iowa
LD PostSecondary	ScenicView Academy	Utah
School	Shady Side Academy	Pittsburgh, PA
School	Shattuck-St. Mary's School	Minnesota
Related Service (Vendor)	Social Assurity LLC	Valley Cottage, NY
School	Solebury School	Pennsylvania
School	South Kent School	Connecticut
College/University	Southern Methodist University	Texas
College/University	Southwestern University	Texas
School	Springdale Preparatory School	Maryland

# School & College Fair

Section of Thursday Fair	Name of Institution/Company	Location
LD PostSecondary	Stephen's Place	Vancouver, WA
School	Stoneleigh-Burnham School	Massachusetts
School	The Stony Brook School	New York
Gap Year/Travel Program	Summer Discovery & Discovery Internships	Nationwide
Related Service (Vendor)	Summit Educational Group	Newton, MA
College/University	Syracuse University	New York
Related Service	Thrivent Financial	Nationwide
School	Tilton School	New Hampshire
Gap Year/Travel Program	Tivnu: Building Justice	Portland, OR
College/University	Trinity College	Connecticut
School	Trinity College School	Ontario
School	Trinity Episcopal School	Texas
College/University	Trinity University	Texas
School	Trinity-Pawling School	New York
Related Service (Vendor)	UC San Diego Extension	La Jolla, CA
College/University	University of Alabama	Alabama
College/University	University of Arkansas	Fayetteville, AR
College/University	The University of British Columbia	BC, Canada
College/University	University of Cincinnati	Ohio
College/University	University of Colorado-Colorado Springs	Colorado
College/University	University of Guelph	Ontario
College/University	University of Hartford	Connecticut
	University of Hartford/The Hartt School	Connecticut
College/University	University of Houston	Houston, TX
College/University	The University of Manchester, UK	Manchester, UK
College/University	The University of Mississippi	Mississippi
College/University	The University of New Mexico	New Mexico
College/University	University of Richmond	Virginia
College/University	University of Rochester	New York
College/University	University of Roehampton, London	London, England
College/University	University of Tampa	Florida
Gap Year/Travel Program	USA Gap Year Fairs	Massachusetts
School	Valley Forge Military Academy and College	Pennsylvania
LD	The Vanguard School	Florida
School	Verde Valley School	Arizona
School	Vermont Academy	Vermont
College/University	Verto Education	California
Gap Year/Travel Program	VISIONS Service Adventures	Global
LD PostSecondary	Vista Life Innovations	Connecticut
School	Wasatch Academy	Utah
College/University	Washington College	Maryland
School	The Webb School	Tennessee
College/University	Webster University	Missouri
School	West Nottingham Academy	Maryland
School	West Sound Academy	Washington
School	Western Reserve Academy	Hudson, OH
School	Westover School	Connecticut
School	The White Mountain School	New Hampshire
School	The Williston Northampton School	Massachusetts
School	Wilson Hill Academy	Austin - Virtual School
School	Winchendon School	MA & NY
School	Wolfeboro: The Summer Boarding School	Wolfeboro, NH





7:00 a.m.	7:00–9:30 a.m. <b>Final Dedicated Vendor Hall Time and Networking Lounge Open</b>		
7:30 a.m.	7:45–9:15 a.m. <b>Continental Breakfast</b> <i>Conference Central, Lone Star Foyer, Level 3 (seating in Lone Star Salon E)</i>	7:30–9:15 a.m. <b>Annual Membership Meeting with Breakfast</b> for all IECA Member Consultants: Professional, Associate, & Student Members <i>Lone Star Salon C, Level 3 see page 81 for information</i>	7:30–8:00 a.m. <b>Guided Meditation</b> <i>Room 307, Level 3</i>
9:30 a.m.	9:30–11:00 a.m. <b>General Session with ACE Talks</b> <i>Lone Star Salon D, Level 3 see page 80 for information</i>		
11:15 a.m.	11:15 a.m.–12:30 p.m. <b>Set Up for Therapeutic Information Swap</b> <i>Griffin Hall, Level 2</i>	11:15 a.m.–12:30 p.m. <b>Breakout and Discussion Sessions (500 Series)</b> <i>see pages 82-83 for information</i>	11:15 a.m.–12:30 p.m. <b>School Water Cooler Talks</b> <i>see page 83 for information 305, Level 3</i>
12:30 p.m.	12:30–2:30 p.m. <b>Therapeutic Information Swap with Lunch</b> <i>Griffin Hall, Level 2</i>	12:30–1:15 p.m. <b>Lunch for all IECs</b> <b>Therapeutic Information Swap</b> <i>Griffin Hall, Level 2</i>	12:30–1:15 p.m. <b>Therapeutic Information Swap Welcomes Traditional Schools</b> <i>Griffin Hall, Level 2</i>
1:15 p.m.	1:15–2:30 p.m. <b>College Showcase</b> <i>see page 80 for information Lone Star Salon D, Level 3</i>		
2:30 p.m.	2:30 p.m. <b>Conference Closes</b>		

# Friday Events

## Thought leaders in Adolescence, Consulting, and Education.

Friday's general session will feature a series of three renowned experts each conducting a 15-20 minute dynamic and energetic presentation to share a major point, theme, or innovative idea with our audience.



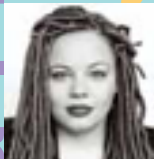
Friday | April 27 | 9:30 a.m.

Lone Star Salon D, Level 3

### Rejection to Opportunity

As an entrepreneur, experiencing rejection is inevitable but why can't we learn from rejection instead of being afraid and discouraged by it? It is hard to be told no at times, but Vanessa shares how you can find opportunities beyond rejection. She teaches ten strategic steps on how to be resilient through life's "no's." Sharing inspiring examples from her experiences, she will challenge you to ask why instead of why not.

**Vanessa McNeal, MSW, is a tenacious and thought provoking national speaker, film producer, and business owner**



### The Myth of Multitasking: How 'Doing It All' Gets Nothing Done

This talk will confront a popular idea that has come to define our hectic world. It will explain why multitasking is, in fact, a lie that wastes time and costs money. Far from being efficient, multitasking actually damages productivity and relationships at work and at home.

**Dave Crenshaw is a master of building productive leaders**



### The Resurrection of Character in Admissions

In the midst of a renewed interest in the role of character in American life, a growing number of schools and colleges are elevating the role of character attributes in their programs and in selecting students. This session will report on the emerging revolution in how college admission offices are incorporating assessments of character in their decision-making.

**David Holmes, Co-Founder and Co-Director, Institute on Character and Admission**



CE: 1.00 Clock Hour

Friday ☆ 1:15 – 2:30 p.m.

Lone Star Salon D, Level 3

## College Showcase

Take the opportunity Friday afternoon to hear from admissions counselors representing colleges and universities from Texas and across the country. Large and small, public and private, don't miss this unique opportunity to add to your "college knowledge."

CE: 1.50 clock hours (for IECs only)

- ◆ Abilene Christian University (TX)
- ◆ Austin College (TX)
- ◆ College of Charleston (SC)
- ◆ Colorado State University (CO)
- ◆ Franklin University Switzerland (Switzerland)
- ◆ Goucher College (MD)
- ◆ Iowa State University (IA)
- ◆ Marquette University (WI)
- ◆ Rhodes College (TN)
- ◆ St. Edward's University (TX)
- ◆ Southwestern University (TX)
- ◆ Texas State University (TX)
- ◆ The University of Alabama (AL)
- ◆ University of Colorado- Colorado Springs (CO)
- ◆ University of Hartford (CT)



## 501 Featured Breakout: The Myth of Multitasking: Increase Your Value With the Power of Hidden Time!

This workshop will take a closer look and share tips on how to take control of technology, including email and smartphones; how to reduce and respond to workplace interruptions; how to focus on your most valuable activities; how to budget your time and lower your stress; and how to grow your career and still have time for family and friends.

*Dave Crenshaw, author of The Myth of Multitasking*

**Lone Star Salon A, Level 3**

*Tracks: B, C, G, I, L, S, T*

*Target Content Level: Foundational*

*CE: 1.25 Clock Hours*

## 502 Easy Executive Function Strategies to Incorporate into Your Work with Students

Weak executive functions can impact a student's progression through the college application process. This can lead to problems with prioritizing, managing time, planning, and initiating the applications. The daily challenges that exist can cause students to fall behind, stress, lose track, or be unable to complete their applications. This session will focus on how to better identify these students, strategies to incorporate into your practice, and how you can better support students' executive function skills, and create a smoother process.

*Scott Lutostanski, Galin Education*

**Lone Star Salon B, Level 3**

*Track: L*

*Target Content Level: Foundational*

*CE: 1.25 Clock Hours*

## 503 Can't Pay vs. Won't Pay: Dealing with Difficult Financial Aid Situations

What do you do when parents' misperceptions about—or outright refusal to discuss—who's responsible for college costs thwart your best intentions as an IEC? How do you handle the non-custodial parent who refuses to complete the CSS Profile or the stepparent who won't divulge assets on the FAFSA? How do you get hostile parties to cooperate with each other for the benefit of their children? Learn how to discuss difficult affordability issues prior to creating college lists; debunk common merit scholarship and other financial aid related myths; provide up-to-date information on how colleges evaluate family finances; and discover concrete strategies for addressing the "won't pay" mentality.

*Maureen Chang, IECA Associate; Carol Doherty, IECA*

**Lone Star Salon C, Level 3**

*Track: C*

*Target Content Level: Applied*

*CEU: AICEP Eligible Only*

## 504 Managing Psychological Risks in Transporting Youth to Treatment Settings

Transporting youth is often a necessary mode of initiating treatment that can exacerbate current psychological and emotional status. We will discuss transportation protocol from home to treatment site, methods used to stabilize in transit, and begin the process of acceptance and problem solving. We will also address ways of interacting and intervening with youth and family that results in trauma reduction and prepares for a positive outcome. Recommendations for assessment and supportive intervention for treatment providers of youth in transport will be included.

*Jason Capel, Solstice RTC;*

*Brian Shepherd, Right Direction Crisis Intervention*

**Room 302, Level 3**

*Track: T*

*Target Content Level: Applied*

*CE: 1.25 Clock Hours*





## 505 Information at Your Fingertips: Using Data to Build Smarter College Lists

Overwhelmed by all the information out there but not sure which resources to turn to? Then this session is for you. Using simple case studies, we will introduce you to three charts that are indispensable resources and easy to use—ED and RD Admit Rates, Domestic Financial Aid, and Financial Aid for International Students. You will learn how to quickly uncover the important data in these spreadsheets, how to sort them easily, and how to efficiently use them to build smarter college lists. Bring your laptops with you because wifi will be available during this hands-on, interactive workshop. Data doesn't tell us everything, but who doesn't want to be the most knowledgeable person in the room?

*Jennie Kent and Jeff Levy, IECA*  
**Room 303, Level 3**

*Track: C*  
*Target Content Level: Applied*  
*CEU: AICEP Eligible Only*

## 506 Water Cooler Talks

The Water Cooler Talks provide an opportunity for informal conversations among IECs and school admission reps for collaboration and collegiality, to discuss the work they are doing, trends they are observing, and the families they are seeing. Attendees should bring topics they'd like to discuss.

*Moderated by Elizabeth Hall, IECA*  
**Room 305, Level 3**

*Track: S*  
*Target Content Level: Foundational*  
*CE: 1.25 Clock Hours*

## 507 Growing Your Business Sustainably While Improving the Student Experience

More and more IECs are choosing to work in teams. The share of IECA members in multi-person consultancies has risen from below 20% in 2014 to 51% today, and this move toward scale is opening up new frontiers for the entire industry. Larger counseling groups can impact more students, keep more of their profits, and attract investors. Whether you're making a first hire, growing your team, or seeking investors, we will discuss how you can grow your business while maintaining your service quality and student-centeredness that drives your

business. We'll also address how to create a culture that attracts top talent for any size business and how to use technology to manage that growth.

*Rohan Pasari, Cialfo College Guidance Platform;*  
*Beth Dennard, Bright Futures Consulting, LLC*  
**Lone Star Salon F, Level 3**

*Tracks: B, I*  
*Target Content Level: Applied*  
*CE: 1.25 Clock Hours*

## 508 Moving from Diagnosis to Treatment and Aftercare for Adolescents and Young Adults with ASD

This session will focus on best practices in evaluation, differential diagnosis, and treatment of adolescents and young adults with ASD and other social development disorders. The evaluation process, in addition to diagnosis, should identify individual strengths to build on, therapeutically. A team approach from the psychologist, therapist, and IEC can help promote the family's and student's understanding of their diagnosis and bridge the gap between assessment and treatment to ensure that aftercare meets the specific needs of the individual. Effective approaches for developing employability and leisure skills, as well as experiential social and executive functioning coaching will be discussed.

*Nicole Stewart, PsychSolutions; Caitlin Galt, Aspiro*  
**Lone Star Salon G, Level 3**

*Tracks: L, T*  
*Target Content Level: Applied*  
*CE: 1.25 Clock Hours*

## 509 Lost in Translation, Found in Cultural Norms: Understanding Challenges Facing International Students

In this interactive session, we will explore the cultural differences that impact international student integration and success, with an emphasis on the Chinese student experience in American schools and universities. We will then dive into how these cultural differences affect student performance, beginning with the admissions process and ending in disappointingly high attrition rates. Finally, we will offer and gather insights and strategies from attendees about how IECs and school stakeholders can take an active role in bridging cultural gaps to help international students reach their full potential in the US.

*Aihua (Jessica) Huang, IECA;*  
*Jennifer Richmond and Julia Gooding, IECA Associates*  
**Lone Star Salon H, Level 3**

*Tracks: C, I, S*  
*Target Content Level: Foundational*  
*CE: 1.25 Clock Hours*



# Information Swap

Your Key Opportunities  
to Make Connections

## Friday's Information Swap:

**12:30-2:30 p.m.** includes lunch

**Griffin Hall | Level 2**

CE: 2.00 clock hours *(for IECs only)*

### Participants include:

- ★ Residential treatment centers, outdoor and wilderness programs, and therapeutic, developmental, and emotional growth schools
- ★ Postsecondary and transitional schools and programs (therapeutic)
- ★ Vendors and related service companies (transport, publishers, software, finance)
- ★ IECs who work with these institutions

## Special Swap Time for School & College Reps

**12:30-1:15 p.m.**

The first 45 minutes of the Therapeutic Information Swap on Friday will be open to traditional school representatives to visit the event.

## Finding a Specific Institution

An alphabetical list of all institutions participating in the Information Swap begins on page 86.

A listing of all conference participants starts on page 93.



# Information Swap

**Friday ☆ April 27 ☆ 12:30–2:30 p.m.**  
**Griffin Hall on Level 2 of the JW Marriott Austin**

*(see supplement for those registered after April 4, 2018)*

**All institutions in the Swap room are organized alphabetically by program/company name.**

Participants include: Residential Treatment Centers, Therapeutic, Developmental, and Emotional Growth Schools and Programs, and Outdoor and Wilderness Programs; Post-Secondary and Transitional Schools and Programs (with therapeutic component); Vendors and Related Service Companies (i.e. transport, publishers, software)

*The Thursday School & College Fair participant list can be found on page 70.*

Type of Program	Name of Institution/Company	Location
PostSecondary/Transition	360	National
Therapeutic School/Program	Academy at Sisters	Bend, OR
PostSecondary/Transition	Alpha 180	Texas
Therapeutic School/Program	Alpine Academy	Utah
Related Service (Vendor)	Amer. Inst. of Certified Educ'l Planners	Highland Park, IL
Therapeutic School/Program	Anderson Center for Autism	Staatsburg, NY
Therapeutic School/Program	Anxiety Institute	Greenwich, CT
Therapeutic School/Program	Arrowhead Ranch	Illinois
Therapeutic School/Program	Ascend Recovery - The Discover Center	Utah
Therapeutic School/Program	Ashcreek Ranch Academy	Utah
Therapeutic School/Program	Asheville Academy for Girls	North Carolina
Therapeutic School/Program	Aspiro Adventure	Utah
Therapeutic School/Program	Aspiro Group	Draper, UT
Therapeutic School/Program	Auldern Academy	North Carolina
Therapeutic School/Program	Avalon Malibu	California
Therapeutic School/Program	BaMidbar Wilderness Therapy	Colorado
Therapeutic School/Program	Bayes Achievement Center	Texas
Related Service (Vendor)	BestNotes	Idaho
Therapeutic School/Program	Bill Lane & Assoc. Adolescent Transports	California
Therapeutic School/Program	Black Mountain Academy	North Carolina
Therapeutic School/Program	BlueFire Wilderness Therapy	Idaho
Therapeutic School/Program	Blue Ridge Therapeutic Wilderness	Clayton, GA
Therapeutic School/Program	Boulder Creek Academy	Idaho
Therapeutic School/Program	BRC Recovery	Texas
Related Service	Breakthrough Interventions	National
Therapeutic School/Program	Bridge House	Utah
Therapeutic School/Program	The Bridge Supportive Gap - Costa Rica	Costa Rica
PostSecondary/Transition	Brooke Whitted Center	Illinois
Therapeutic School/Program	Building Bridges	Montana
Therapeutic School/Program	Burning Tree Programs	Texas
Therapeutic School/Program	Calo	Missouri
Therapeutic School/Program	Calo East	Pennsylvania
Therapeutic School/Program	Cardinal Cushing Centers	Massachusetts
Therapeutic School/Program	Cascade Crest Transitions	Bend, OR
Therapeutic School/Program	Catalyst	Utah
Therapeutic School/Program	Center for Change	Utah
Therapeutic School/Program	CERTS Kolob Canyon/Moonridge Acad.	Utah
Therapeutic School/Program	CERTS La Europa Academy	Utah

# Tables by Institution

Type of Program	Name of Institution/Company	Location
Therapeutic School/Program	CERTS Mountain Springs Prep Academy	Utah
PostSecondary/Transition	Chapter House	Texas
Therapeutic School/Program	Cherokee Creek Boys School	South Carolina
Therapeutic School/Program	Cherry Gulch	Idaho
Therapeutic School/Program	Chrysalis	Montana
Therapeutic School/Program	Clearfork Academy	Texas
Therapeutic School/Program	Clearview Communities	Frederick, MD
Related Service (Vendor)	College Essay Guy	Los Angeles, CA
Therapeutic School/Program	Continuum Coaching	Utah
Therapeutic School/Program	Corner Canyon Recovery	Draper, UT
Therapeutic School/Program	Crosswinds-Caribbean Mountain Acad.	Dominican Republic
Therapeutic School/Program	Cumberland Heights	Nashville, TN
Therapeutic School/Program	Daniels Academy	Utah
Related Service	Denials Management, Inc.	Utah
Therapeutic School/Program	Diamond Ranch Academy	Utah
Therapeutic School/Program	Discovery Academy	Utah
Therapeutic School/Program	Discovery Connections	Utah
Therapeutic School/Program	Discovery Ranch	Utah
Therapeutic School/Program	Discovery Ranch for Girls	Utah
Therapeutic School/Program	The Discovery School of Virginia	Virginia
PostSecondary/Transition	Dragonfly Transitions	Oregon
PostSecondary/Transition	EDGE Learning & Wellness Collegiate Comm.	Chicago, IL
Therapeutic School/Program	Elements Traverse	Utah
Therapeutic School/Program	Elements Wilderness	Utah
Therapeutic School/Program	Enterhealth	Texas
Therapeutic School/Program	Equinox RTC	North Carolina
Therapeutic School/Program	Evoke at Cascades	UT and OR
Therapeutic School/Program	Evoke Therapy Programs	Utah
Therapeutic School/Program	The Experiential Healing Institute	Nationwide
Therapeutic School/Program	Forest Heights Lodge	Evergreen, CO
PostSecondary/Transition	Foundation for Independent Living, Inc.	Florida
PostSecondary/Transition	Foundations Asheville	North Carolina
Therapeutic School/Program	Fulshear Treatment to Transition	Texas
Therapeutic School/Program	Gateway Academy	Utah
Therapeutic School/Program	Greenbrier Academy for Girls	West Virginia
Therapeutic School/Program	Grove School	Connecticut
Therapeutic School/Program	The Guild School	Massachusetts
PostSecondary/Transition	The Haven at College	Nationwide
Therapeutic School/Program	The Heritage Community	Utah
Therapeutic School/Program	Heritage Community: Elevate Academy	Utah
Therapeutic School/Program	Heritage Community: Launch	Utah
Therapeutic School/Program	Heritage Community: Spark Academy	Utah
Therapeutic School/Program	The High Frontier	Texas
Therapeutic School/Program	HopeWay	North Carolina
Related Service (Vendor)	IECA Foundation	Fairfax, VA
Therapeutic School/Program	In Balance Continuum of Care	Arizona
Related Service (Vendor)	Independent School Management	Wilmington, DE
Therapeutic School/Program	Innercept	Idaho
Therapeutic School/Program	InnerChange	Utah
Therapeutic School/Program	JRI - Glenhaven Academy	Massachusetts
Therapeutic School/Program	Juniper Canyon Recovery Cntr for Women	Utah
Therapeutic School/Program	Justice Resource Institute	Fall River, MA



# Information Swap

Type of Program	Name of Institution/Company	Location
Therapeutic School/Program	Kaizen Academy	Utah
Therapeutic School/Program	The King's Daughters' School	Tennessee
PostSecondary/Transition	Lake House Academy	North Carolina
Therapeutic School/Program	Lakemary Center	Kansas
Therapeutic School/Program	Legacy Outdoor Adventures	Utah
Therapeutic School/Program	Lifeskills South Florida	Deerfield Beach, FL
Therapeutic School/Program	Lindner Center of HOPE	Ohio
Therapeutic School/Program	Little Keswick School	Virginia
Therapeutic School/Program	Live Strong House	Utah
Therapeutic School/Program	Logan River Academy	Utah
Therapeutic School/Program	Maple Rise Academy	Utah
Therapeutic School/Program	McLean Hospital	Boston, MA
Therapeutic School/Program	Meadowridge Academy	Massachusetts
Therapeutic School/Program	The Menninger Clinic	Houston, TX
Therapeutic School/Program	Meridell Achievement Center	Texas
Therapeutic School/Program	Meristem	Northern California
PostSecondary/Transition	Milestones for Young Adults	Coeur d'Alene, ID
Therapeutic School/Program	Monarch Center for Autism-Bellefaire JCB	Cleveland, OH
Therapeutic School/Program	Montana Academy	Montana
Therapeutic School/Program	Montford Hall	North Carolina
Therapeutic School/Program	Monuments	Utah
Therapeutic School/Program	Mountain Valley Treatment Center	New Hampshire
Related Service	NATSAP	Maryland
Therapeutic School/Program	New Focus Academy	Heber City, UT
Therapeutic School/Program	New Haven	Spanish Fork, UT
Therapeutic School/Program	New Leaf Academy	Oregon
Therapeutic School/Program	New Roads Behavioral Health	Utah
Therapeutic School/Program	New Summit Academy & The Bridge	Costa Rica
Therapeutic School/Program	New Vision Wilderness Therapy	Wisconsin
Therapeutic School/Program	Newport Academy	CT, NY, CA
Related Service (Vendor)	Next Step Youth Transport Services	Round Rock, TX
Therapeutic School/Program	Northwest Academy	Idaho
PostSecondary/Transition	Northwest College Support	Idaho
Therapeutic School/Program	Ohana House	Oregon
PostSecondary/Transition	Oliverian School	New Hampshire
Related Service (Vendor)	Online Behavior Analysis	Austin, TX
Therapeutic School/Program	Optimum Performance Institute	California
Therapeutic School/Program	Origins Behavioral HealthCare	FL & TX
Therapeutic School/Program	Outback Therapeutic Expeditions	Utah
Therapeutic School/Program	Oxbow Academy East	Utah
Therapeutic School/Program	Oxbow Academy West	Utah
PostSecondary/Transition	Pacia Life	Utah
Therapeutic School/Program	Pacific Quest	Hawaii
Therapeutic School/Program	Pasadena Villa	Tennessee, FL
Therapeutic School/Program	Perimeter Healthcare	MO, AR, AL, TN, LA, GA
PostSecondary/Transition	Point School Puerto Rico	Puerto Rico
PostSecondary/Transition	PRN for families	Colorado
Therapeutic School/Program	PsychSolutions	Utah
Therapeutic School/Program	Pure Life Adventure	Costa Rica
Therapeutic School/Program	Pure Life Aspiro	Costa Rica
Related Service (Vendor)	Rallyest	Alpine, UT
Therapeutic School/Program	The Ranch at Dove Tree	Lubbock, TX

# Tables by Institution

Type of Program	Name of Institution/Company	Location
PostSecondary/Transition	Red Mountain Sedona	Sedona, AZ
Therapeutic School/Program	Red Oak Recovery	Asheville, NC
Therapeutic School/Program	RedCliff Ascent	Enterprise, UT
Therapeutic School/Program	RedCliff Recovery	Utah
PostSecondary/Transition	Redwood Grove Diagnostics & Transitions	Utah
Therapeutic School/Program	Renewed Hope Ranch	Utah
Therapeutic School/Program	ReSTART	Washington
Related Service	Right Direction Crisis Intervention	USA
Therapeutic School/Program	Rose Hill Center	Michigan
Therapeutic School/Program	Rosecrance Health Network	Illinois
Therapeutic School/Program	Safeguard	Utah
Therapeutic School/Program	Sandhill Child Development Center	New Mexico
Therapeutic School/Program	Second Nature	Utah
Therapeutic School/Program	Sedona Sky Academy	Arizona
Therapeutic School/Program	Seven Stars	Utah
Therapeutic School/Program	Shelterwood	Missouri
Therapeutic School/Program	Shortridge Academy	New Hampshire
Therapeutic School/Program	Shrub Oak International School	New York
Therapeutic School/Program	Simple Recovery & New Vista Behavioral Hlth	Orange County, CA
Therapeutic School/Program	Skyland Trail	Atlanta, GA
Therapeutic School/Program	Sober College	California
Therapeutic School/Program	Solstice East	Weaverville, NC
Therapeutic School/Program	Solstice Journey Home East	North Carolina
Therapeutic School/Program	Solstice Journey Home West	Utah
Therapeutic School/Program	Solstice West RTC	Layton, UT
Therapeutic School/Program	Sonia Shankman Orthogenic School	Illinois
Therapeutic School/Program	Spring Ridge Academy	Arizona
PostSecondary/Transition	Squaw Valley Academy	California
Therapeutic School/Program	Stonewater Adolescent Addiction Recovery Cntr	Mississippi
Therapeutic School/Program	Summit Achievement	Maine
Therapeutic School/Program	Summit Preparatory School	Montana
Therapeutic School/Program	Sunrise RTC	Utah
Therapeutic School/Program	SUWS of the Carolinas	North Carolina
Therapeutic School/Program	Telos	Orem, UT
Therapeutic School/Program	Telos U	Orem, UT
Therapeutic School/Program	Trails Carolina	North Carolina
Therapeutic School/Program	Trails Momentum	North Carolina
Therapeutic School/Program	True North Wilderness Program	Vermont
Therapeutic School/Program	Turnbridge	Connecticut
Therapeutic School/Program	Uinta Academy	Utah
Therapeutic School/Program	University of Utah Neuropsychiatric Inst.	Utah
Therapeutic School/Program	Valley View School	Massachusetts
Therapeutic School/Program	Villa Santa Maria	New Mexico
Therapeutic School/Program	Visions Adolescent Treatment Centers	California
Therapeutic School/Program	Vista Dimple Dell and Vista Sage	Utah
Therapeutic School/Program	Vista Treatment Centers	Utah
PostSecondary/Transition	Vive	National
Therapeutic School/Program	WayPoint Academy	Utah
Therapeutic School/Program	Waypointe	New Jersey
Therapeutic School/Program	Wediko School	New Hampshire
Therapeutic School/Program	Wediko Summer Program	New Hampshire
Therapeutic School/Program	West Ridge Academy	Utah



# Participants

(see supplement for those registered after April 4, 2018)

The “Table” column indicates the day this school/program will display materials (Thursday School & College Fair or Friday Information Swap). Vendors are located in Conference Central from Wednesday through Friday morning, and may also have tables in the Fair and Swap.

Table	Name	Affiliation	Location	Phone
	Robin Abedon	IECA Member	Wellington, FL	561-790-5462
	Edith Adams	IECA Associate Member	Boston, MA	617-536-4319
Vendor	Vic Adams	Applerouth Tutoring Services	Atlanta, GA	512-364-4353
Thurs.	Thomas Adams-Wall	Western Reserve Academy	Hudson, OH	330-650-9702
	Charles Ahn	IECA Student Member	Seoul, S. Korea	82.10.5066.5035
	Laila Alamuddin	IECA Member	Hinsdale, IL	630 887 6905
Thurs.	Radia Alouache	Loyola Marymount	Los Angeles	310-328-7400
Vendor	Melissa Amaya	Prompt	New York City	844-577-6678
	Adam Amdur	College Choices	Plano, TX	214-287-5822
	Peggy Amdur	IECA Member	Plano, TX	972-998-5810
Thurs.	Tomas Amodio	College Excel	Bend, OR	541-388-3043
	Chris Andersson	IECA Member	New York, NY	212-397-4416
Fri.	Julia Andrick	Northwest Academy	Idaho	208-267-3524
	Steven Antonoff	IECA Member	Denver, CO	303-333-8413
Vendor	Jed Applerouth	Applerouth Tutoring Services	Atlanta, GA	404-285-6943
Thurs.	Amy Armand	College for Creative Studies	Detroit, MI	313-664-7426
Fri.	Rachel Arruda	Justice Resource Institute	Fall River, MA	508-523-7486
	Deborah Ashe	IECA Member	Asheville, NC	917-841-4645
Thurs.	Cheray Ashwill	Trinity Episcopal School	Texas	512-472-9525
Fri.	Tracy Ashworth	Clearview Communities	Frederick, MD	240-439-4900
	Stephen Asztalos	IECA Member	Oakland, CA	510-508-6548
	Jodi Rosenshein Atkin	IECA Associate Member	Rochester, NY	585-820-1174
Thurs.	Molly Averitt	The Hockaday School	Dallas, TX	214-360-6522
	Jessica Azout	IECA Associate Member	Bogota, Colombia	305-433-2000
Fri.	Kelly Baas	Brooke Whitted Center	Illinois	773-420-2596
	Patrick Babcock	Foundation House	Maine	207-767-1717
	Maureen Babineau	IECA Associate Member	Springfield, MA	413-374-0146
Vendor	Ray Babul	CollegePlannerPro	Los Angeles, CA	310-795-9542
Fri.	Tracey Bachrach	Point School Puerto Rico	Puerto Rico	570-367-0979
Thurs.	Ted Backes	The Greenwood School	Vermont	802-387-4545
Vendor	Lisa Bage	Next Step Youth Transport Services	Round Rock, TX	512-853-9525
	LeAnnette Bailey	IECA Office Administrator	Virginia	703-591-4850
	Margaret Bailey	IECA Member	North Salt Lake, UT	512-913-6380
Thurs.	Jon Baker	College Excel	Bend, OR	541-388-3043
	Matthew Baker	IECA Member	Winnetka, IL	847-441-8687
	Stacey Riley Baker	IECA Member	Winnetka, IL	847-441-8687
Thurs.	Chris Bala	The Hill School	Pennsylvania	610-705-1165
Fri.	Chad Balagna	Second Nature	Utah	435-738-2040
Thurs.	Ellyn Baldini	Stoneleigh-Burnham School	Massachusetts	413-774-2711
Thurs.	Bob Baldwin	Southwestern University	Texas	512-863-1201
Fri.	Deara Ball	Aulderm Academy	North Carolina	828-808-4529
Fri.	Jared Balmer	WayPoint Academy	Utah	801-690-7000
Thurs.	Jennifer Bamann	The Gow School	South Wales, NY	716-687-2005
Fri.	Julie Barbero	Gateway Academy	Utah	801-523-3479
Fri.	Madhuri Barefoot	True North Wilderness Program	Vermont	802-583-1144
Fri.	Sue Barnes	Sunrise RTC	Utah	435-635-1185
Vendor	Teddy Barnes	EssayDog	Montvale, NJ	610-710-1617
Fri.	Carter Barnhart	Newport Academy	Connecticut, CA	610-213-4191
Fri.	Anthony Barrasso	In Balance Continuum of Care	Arizona	520-722-9631
Fri.	Daniel Barrasso	In Balance Continuum of Care	Arizona	520-722-9631
Fri.	Elizabeth Barrasso	In Balance Continuum of Care	Arizona	520-722-9631
Fri.	Patrick Barrasso	In Balance Continuum of Care	Arizona	520-722-9631
Thurs.	John Barrengos	The Putney School	Vermont	802-387-6218
	Lisa Barrett	IECA Member	Athens, GA	770-519-3309
Fri.	Steve Barrick	Renewed Hope Ranch	Utah	888-562-0423



# Participants

Table	Name	Affiliation	Location	Phone
Fri.	Gretchen Bartlett	Monuments	Utah	801-592-3533
Fri.	Matt Bartlett	Monuments	Utah	801-380-4390
Fri.	Cheryl Barton	Corner Canyon Recovery	Draper, UT	801-201-8193
Thurs.	Bradford Bates	Dublin School	New Hampshire	603-563-7075
	Antoinette Battiste	IECA Member	San Jose, CA	408-270-1930
	Daniel Baucum	Launch Centers & Riviera Recovery	California	202-617-0959
Fri.	Dawn Bauer	Pacia Life	OR, UT, PR, CA	385-200-0799
	Elizabeth Baxter	IECA Member	Cincinnati, OH	513-505-6220
Fri.	Daniel Bayes	Bayes Achievement Center	Texas	936-291-3391
Fri.	Monica Bayes	Bayes Achievement Center	Texas	936-291-3391
Thurs.	Jessica Bayreuther	Cardigan Mountain School	New Hampshire	603-523-3528
Vendor	Amie Becker	UC San Diego Extension	La Jolla, CA	858-534-9274
Fri.	Ricky Becker	New Vision Wilderness Therapy	Oregon	262-389-6778
Thurs.	Tracy Beckley	Kalamazoo College	Michigan	269-303-2251
Fri.	Tammy Behrmann	Ashcreek Ranch Academy	Utah	435-215-0500
Thurs.	Brent Benner	University of Tampa	Florida	813-257-3002
Fri.	Melvin Bennett	The Ranch at Dove Tree	Lubbock, TX	817-914-6377
	Stephanie Bensinger	IECA Associate Member	Charlotte, NC	804-514-8436
Vendor	Sara Berard	Compass Education Group	Beverly Hills, CA	818-209-7184
	Sandy Bercu	IECA Member	Tampa, FL	813-963-6342
	Judith Berg	IECA Emeritus Member	Little Silver, NJ	732-530-7979
	Nina Berler	IECA Member	Chatham, NJ	973-723-6046
Thurs.	Alexandra Beskrowni	EF International Language Campuses	Cambridge, MA	617-619-1927
	Dave Best	IECA Associate Member	West Palm Beach, FL	561-284-1266
Fri.	Mike Beswick	Greenbrier Academy for Girls	West Virginia	304-445-7790
Fri.	Jonathan Bicknell	True North Wilderness Program	Vermont	802-583-1144
Thurs.	Nicole Biggie	St. Johnsbury Academy	Vermont	802-751-2440
	Wendy Bigler	IECA Associate Member	Japan	81.070.1317.5870
Thurs.	Martha Black	St. Stephen's Episcopal School	Texas	512-327-1213
Thurs.	Nicholas Blaikie-Puk	Ridley College	Ontario	905-684-1889
Fri.	Ryn Blecke	Solstice East	Weaverville, NC	435-841-0704
	Larry Blumenstyk	IECA Member	Morristown, NJ	973-457-5467
Fri.	Michele Boguslofski	Alpine Academy	Utah	435-228-0100
Thurs.	William Scott Bolin	The University of New Mexico	New Mexico	505-382-0812
	Elida Bonet	IECA Member	Austin, TX	512-663-3261
	Jean Bonnyman	IECA Associate Member	Davidson, NC	704-892-4533
	Louise Borden	IECA Associate Member	Valencia, CA	216-385-0614
	Lynne Bossart	IECA Associate Member	Simsbury, CT	860-408-6419
	Ian Bott		Houston, TX	713-397-2856
Thurs.	Stephanie Boulay	Darrow School	New York	518-794-6025
Fri.	Amy Bowler	Sunrise RTC	Utah	435-635-1185
Thurs.	Christine Bowman	Colleges That Change Lives	California	512-497-1024
Thurs.	Jeremy Boyce	Trinity University	Texas	210-999-8547
Thurs.	Barbara Boyette	American Hebrew Academy	North Carolina	336-217-7073
Thurs.	Jennifer Boyko	Trinity College School	Ontario	905-885-3217
	Annamarie Brachfeld	IECA Associate Member	Monument, CO	719-482-6633
	Sarah Brachman	IECA Communications Manager	Virginia	703-591-4850
Thurs.	Michelle Bracken	Curry College	Massachusetts	617-333-2106
Vendor	Amy Bradley	YouScience	Nashville, TN	615-850-1830
	Lorena Bradley	Lorena Bradley, Ph.D.	Nebraska	402-304-0760
Thurs.	Bianca Bragg	College Prog. for Students w/ Autism Spect. Dis.-Marshall U.	West Virginia	304-696-3106
	Jolyn Brand	Brand College Consulting	Friendswood, TX	832-569-2467
Fri.	Jessica Breton	Optimum Performance Institute	California	818-610-3956
Fri.	Hannah Brett	Turnbridge	Connecticut	203-937-2309
Fri.	Chelsea Brigham	Simple Recovery & New Vista Behavioral Hlth	Orange County, CA	949-662-5240
	Wendy Briley	IECA Associate Member	Wake Forest, NC	919-607-1265
Thurs.	Katherine Brink	Miss Porter's School	Connecticut	860-409-3615
Thurs.	Steven Bristol	The Hun School of Princeton	New Jersey	609-921-7600
Thurs.	Michael Broderick	Saint Stanislaus	Mississippi	228-467-9057
Fri.	Pamela Broker	Milestones for Young Adults	Coeur d'Alene, ID	208-676-8235
Fri.	Shawn Brooks	Oxbow Academy West	Utah	435-436-9460

# Participants

Table	Name	Affiliation	Location	Phone
Thurs.	Sara Brookshire	Brandeis University	Waltham, MA	781-736-3500
Fri.	Jenn Brown	PsychSolutions	Utah	801-592-9113
Fri.	Mike Brown	Red Mountain Sedona	Sedona, AZ	928-284-2690
Vendor	Patrick Brown	Prompt	New York City	844-577-6678
	Lisa Buchwalter	IECA Member	San Anselmo, CA	415-444-6349
Fri.	Kristen Buck	New Haven	Spanish Fork, UT	801-794-1218
Fri.	Mike Bulloch	WayPoint Academy	Utah	801-690-7000
Fri.	Andrea Burgess	Discovery Ranch for Girls	Utah	435-592-5529
Thurs.	JP Burlington	Trinity-Pawling School	New York	845-855-4822
Fri.	Tyler Burnett	The Menninger Clinic	Houston, TX	210-289-3020
Vendor	Jill Burstein	College Supports for Learning Differences	Illinois	847-940-8090
	Jill Burstein	IECA Member	Northbrook, IL	847-940-8090
	Jordan Burstein	IECA Associate Member	Northbrook, IL	847-940-8090
Thurs.	Barbara Bush	Marbridge Foundation	Texas	512-282-1144
Fri.	Eric Button	Burning Tree	Texas, Arizona	512-285-5900
	Shay Butts	Academic Answers	Houston, TX	713-840-8547
	Catherine Byerly	IECA Associate Member	Alexandria, VA	703-671-8316
Thurs.	Crystal Caba	EXPLO	MA & CT	781-762-7400
	Nancy Cadwallader	IECA Member	Baton Rouge, LA	225-928-1818
Fri.	Art Cajigal	Arrowhead Ranch	Illinois	309-799-7044
	Benjamin Caldarelli	IECA Associate Member	Princeton, NJ	609-454-8520
Fri.	Rachel Call	Greenbrier Academy for Girls	West Virginia	304-445-8240
Thurs.	Julia Caminiti	Champlain College	Vermont	802-651-5994
Thurs.	Diane Campbell	San Domenico School	California	415-258-1990
	Kristie Campbell	IECA Member	Bonnors Ferry, ID	208-267-5550
Fri.	Katherine Canada	The Guild School	Massachusetts	781-893-6000
	Jack Cao	IECA Member	Beijing, China	86.10.6500.6580
Fri.	Jason Capel	Solstice West RTC	Layton, UT	801-243-2540
	Carolyn Caplan	IECA Associate Member	Houston, TX	832-356-3390
Thurs.	Jarrold Caprow	Cardigan Mountain School	New Hampshire	603-523-3543
Thurs.	Margo Cardner	Buxton School	Massachusetts	413-458-3919
	Lisa Carlton	IECA Member	Austin, TX	512-243-6181
	Robert Carlton	IECA Associate Member	Austin, TX	650-454-6140
Thurs.	Michael Carpentier	Shattuck-St. Mary's School	Minnesota	507-333-1545
Thurs.	Aria Carter	The Greenwood School	Vermont	802-387-4545
Vendor	Melinda Carter	Rallyest	Alpine, UT	801-319-0373
	Megan Cartier	TABS-The Association of Boarding Schools	Asheville, NC	828-785-5155
	Joan Casey	IECA Member	Brookline, MA	617-734-3700
Fri.	Dustin Cash	Northwest Academy	Idaho	877-882-0980
	Diane Cashion	IECA Member	San Diego, CA	858-451-3306
Fri.	Sarah Casson Rush	Cascade Crest Transitions	Bend, OR	541-788-6386
Thurs.	Steve Castles	California Institute of the Arts	California	415-291-3071
Fri.	Amanda Cencak	Aspiro Group	Draper, UT	801-819-2353
Thurs.	Olivia Cerre	Lake Superior State University	Michigan	906-635-2644
Thurs.	Katie Chamberlain	Westover School	Connecticut	203-577-4623
	Maureen Chang	IECA Associate Member	Danville, CA	925-838-0278
Fri.	Matthew Checketts	Vista Treatment Centers	Utah	801-910-5891
	Liwen Chen	Future IntEdu Center	New York, NY	347-698-8200
	Robert Chen	IECA Member	Taiwan	8869.5335.1998
Thurs.	Kathy Cheng	Rustic Pathways	Ohio	440-856-3162
	Lisa Cheyette	IECA Member	Roswell, GA	678-480-3146
Thurs.	Mary Chobanian Aguirre	Dickinson College	Carlisle, PA	717-245-1231
	Kimberly Chorosiewski	IECA Member	Boston, MA	617-536-4319
Fri.	Neal Christensen	Elements Wilderness	Utah	435-691-5228
	Calli Christenson	IECA Member	Houston, TX	806-438-0030
Thurs.	Jackie Christopher	University of Roehampton, London	London, England	202-425-2999
	Carey Cimino	Your College Journey	Encinitas, CA	858-583-3218
	Timothy Clark	IECA Associate Member	Boston, MA	617-536-4319
	Lynne Clarke	IECA Associate Member	Dallas, TX	214-693-2772
	Rebecca Claster	IECA Associate Member	Washington, DC	202-368-1888
Fri.	Linda Clefisch	Forest Heights Lodge	Evergreen, CO	303-674-6681

# Participants

Table	Name	Affiliation	Location	Phone
Fri.	Aleshka Cleveland	Trails Carolina	North Carolina	828-885-5920
	Rachel Coates	IECA Member	Brooklyn, NY	718-350-1265
Thurs.	Phil Cocchiola	The Oxford Academy	Westbrook, CT	860-399-6247
	Tracy Coffin	IECA Associate Member	Austin, TX	512-680-4815
Vendor	Diana Cohen	Applerouth Tutoring Services	Atlanta, GA	404-217-1921
Thurs.	Jennifer Cohen	LaunchPad Education	Online	214-521-1543
Vendor	Vita Cohen	Amer. Inst. of Certified Educ'l Planners		
	Vita Cohen	IECA Member	Highland Park, IL	847-254-4347
Fri.	Ryan Coley	Aspiro Adventure	Utah	801-349-2740
Thurs.	Justin Collier	Life Development Institute	Arizona	623-773-2774
Fri.	Terry Columbus	Little Keswick School	Virginia	434-295-0457
Vendor	Wendy Compton	360 Planner	Simi Valley, CA	512-632-2793
Fri.	Colleen Contreni	Anderson Center for Autism	Staatsburg, NY	845-889-9124
Fri.	John Conway	EDGE Learning & Wellness Collegiate Community	Chicago, IL	224-616-2655
Thurs.	Edward Cooper	Wolfeboro: The Summer Boarding School	Wolfeboro, NH	603-569-3451
Fri.	Shaler Cooper	Cherokee Creek Boys School	South Carolina	864-710-8183
	Laura Cooperman	IECA Associate Member	Scarsdale, NY	914-420-8886
	Kelly Corey	Paula Feldman & Kelly Corey	Temecula, CA	951-699-5295
Fri.	Shirley Cornett	Villa Santa Maria	New Mexico	505-281-3609
Fri.	Tim Corson	Montana Academy	Montana	406-858-2339
Vendor	Cindy Costley	360 Planner	Simi Valley, CA	877-843-3305
	Alison Cotten	The College Scout	Cypress, TX	713-922-4920
Fri.	Suzanne Courtney	Spring Ridge Academy	Arizona	928-925-5965
Fri.	Dana Cox	Safeguard	Utah	801-763-1319
Fri.	David Craig	The King's Daughters' School	Tennessee	931-388-3810
Thurs.	Robert Crawford	Life Development Institute	Glendale, AZ	623-773-2774
	Mark Cruver	IECA Member	Peachtree City, GA	678-371-1346
Fri.	Janice Cummings	Academy at Sisters	Bend, OR	541-389-2748
Fri.	Barb Cunningham	Summit Preparatory School	Montana	406-261-9437
	Gail Curran	IECA Member	Peoria, AZ	602-904-1282
Thurs.	Katie Cusimano	The Horizons School	Birmingham, AL	205-322-6606
Thurs.	Lawrence D'Andrea	Valley Forge Military Academy & College	Pennsylvania	610-989-1430
	Susan Dabbar	IECA Member	Washington, DC	281-615-7005
	Tanya Dalebout	Open Sky Wilderness Therapy	Colorado/Utah	970-382-8181
	Kera Dalton	IECA Associate Member	Marblehead, MA	781-789-8458
	Brooke Daly	IECA Associate Member	Raleigh, NC	919-601-7000
Vendor	Travis Daly	CollegePlannerPro	Los Angeles, CA	919-961-0972
Thurs.	Ernest Damalie	University of Guelph	Ontario	519-824-4120
Thurs.	David Damico	North Country School	New York	518-523-9329
Fri.	Mary Davidson	Arrowhead Ranch	Illinois	309-799-7044
Fri.	Austin Davis	Clearfork Academy	Texas	817-259-2597
	Deborah Davis	IECA Member	Ridgefield, CT	203-438-0624
	Karen Davis	Academic Answers	Austin, TX	512-306-8567
Vendor	Lisa Davis	CollegePlannerPro	Los Angeles, CA	424-250-0396
	Patricia Davis	IECA Member	Colorado Springs, CO	719-332-0081
Fri.	Ryan Davis	Monarch Center for Autism - Bellefaire JCB	Cleveland, OH	216-320-8266
Fri.	Gordon Day	Seven Stars	Utah	801-897-3957
Thurs.	Katherine Dayton	VISIONS Service Adventures	Global	406-551-4423
Thurs.	Sam Decock	Indian Mountain School	Connecticut	860-435-0871
	Casey DeGroot	Academic Answers	Austin, TX	512-306-8567
Fri.	Kate Deily	Spring Ridge Academy	Arizona	928-899-5839
Fri.	Kimball DeLaMare	InnerChange	Utah	801-423-5320
Fri.	Steven DeMille	RedCliff Ascent	Enterprise, UT	435-231-4216
	Sue DePra	IECA Deputy Executive Director	Virginia & Pittsburgh, PA	703-591-4850
Thurs.	Colleen Dergosits	The College Experience	New York	518-218-0000
Thurs.	Anna DeRosa	The Knox School	St. James, NY	631-686-1600
Fri.	McKay Deveraux	Outback Therapeutic Expeditions	Utah	828-337-3692
	Jamie Dickenson	IECA Member	Charleston, WV	304-556-4807
	Erika Dietz	IECA Associate Member	Argyle, TX	972-755-8507
	Wanning Ding	IECA Associate Member	Beijing, China	617-949-6985
Fri.	Katherine Dixon	Vista Treatment Centers	Utah	801-446-6312

# Participants

Table	Name	Affiliation	Location	Phone
Thurs.	Libby Doan	North Country School	New York	518-523-9329
	Joseph Dobson	IECA Member	Philadelphia, PA	215-242-3587
Thurs.	Jennifer Doder	Academic Programs International	Texas	512-600-8900
	Dana Doering	IECA Member	Seattle, WA	206-324-3344
	Carol Doherty	IECA Member	Marietta, GA	470-268-6635
	Roxana Dommer	College Calm	San Carlos, CA	650-575-0737
	Kristina Dooley	IECA Member	Hudson, OH	330-475-7054
Fri.	Nico Doorn	Alpha 180	Texas	512-693-1603
	Mark Dorenfeld	Family Help & Wellness	California	626-340-9037
Thurs.	Mehgan Dorman	North Broward Preparatory School	Florida	954-305-6937
Fri.	Clinton Dorny	Discovery Ranch	Utah	801-489-3311
Thurs.	Ben Douglass	Saint James School	Maryland	301-733-9330
	Joyce Draper	IECA Member	Alexandria, VA	703-615-0905
	Sharon Dries	IECA Associate Member	Alpharetta, GA	770-617-0970
	Kelly DuBreuil	IECA Associate Member	Peachtree City, GA	813-395-3669
Fri.	Julie Dudkowski	Skyland Trail	Atlanta, GA	678-686-5926
	Brooke Dudley	IECA Member	San Antonio, TX	210-804-1700
Fri.	Whitney Duhaime	Denials Management, Inc.	Utah	801-466-3838
	Eleanor Duley	IECA Member	Farmington, ME	207-778-1311
Fri.	Guy Dumas	Continuum Coaching	Utah	435-820-4500
Fri.	Kelly Dunbar	SUWS of the Carolinas	North Carolina	828-668-7590
Thurs.	Robin Dunbar	Tilton School	New Hampshire	603-286-1734
Thurs.	Ryan Duncan	The University of Manchester, UK	Manchester, UK	44.161.306.5678
Thurs.	Rosie Dunlap	Marbridge Foundation	Austin	512-282-1144
Thurs.	David Dunleavy	Devereux Glenholme School	Connecticut	860-868-7377
Thurs.	Kristel Dunphy	St. Andrew's School	Rhode Island	401-246-1230
	Laird Durley	IECA Member	Fresno, CA	559-930-9413
Thurs.	Katie Dydyn	University of Hartford	Connecticut	860-768-5473
Thurs.	Grace Eaton	Kimball Union Academy	New Hampshire	603-469-2109
Thurs.	Thomas Eccleston	The Hill School	Pennsylvania	610-705-1296
	Rebecca Eckstein	Admission Network, LLC	Newnan, GA	540-529-7301
Thurs.	Scott Eckstein	Solebury School	Pennsylvania	215-862-5261
Thurs.	Denise Eder	Thrivent Student Resources	Nationwide	937-509-0994
	Darnell Edwards	IECA Associate Member	Houston, TX	818-298-7441
	Nancy Edwards	IECA Member	Auburn, NY	315-277-6063
	Mark Efinger	Interview Skill Coaching Academy	Windsor, MA	978-604-0943
Fri.	Christian Egan	Alpine Academy	Utah	435-228-0100
Thurs.	Kim Eklund	Nord Anglia Education	New York	97.15675.91274
	Marisa Eldredge	HealthCare Pharmaceuticals, Inc.	Utah	801-270-5656
Fri.	Charles Elias	BaMidbar Wilderness Therapy	Colorado	720-409-0486
	Denise Eliot	IECA Associate Member	Studio City, CA	818-324-8172
Fri.	Stacy Elliker	Solstice Journey Home East	North Carolina	435-841-0704
	Brandi Elliott	Brandi Elliott/The Grounds Recovery	Lake Arrowhead, CA	951-315-8320
Thurs.	Taylor Elliott	High Point University	North Carolina	336-841-9392
	Marilyn Emerson	IECA Member	New York, NY	212-671-1972
Thurs.	Cierra Ensign	Midland School	Central Coast CA	805-688-5114
Fri.	Nichol Ernst	Summit Achievement	Maine	207-697-2020
	Mary Ethington	IECA Member	Glenview, IL	847-372-9172
Fri.	Melanie Evans	Discovery Academy	Utah	801-374-2121
Thurs.	Hank Ewert	Austin College	Texas	903-813-2033
Fri.	Julie Faddis	Shelterwood	Missouri	816-249-5377
Fri.	Jill Fairbank	Building Bridges	Montana	406-827-9853
Fri.	Sarah Fairbank	Building Bridges	Montana	406-827-9853
Fri.	Jacqueline Fairbanks	InnerChange	Utah	801-794-1218
Fri.	Charles Falatea	West Ridge Academy	Utah	801-282-1123
	Andy Falter	IECA Sponsor Relations Manager	New York	203-797-9559
Fri.	Janet Farnsworth	West Ridge Academy	West Jordan, UT	801-282-1000
Thurs.	Tom Faxon	Oldfields School	Maryland	443-662-1008
	Nancy Federspiel	IECA Member	Bolton, MA	978-634-1690
Fri.	Kate Fehr	PsychSolutions	Utah	801-528-5140
Thurs.	Jaime Feinman	Forman School	Connecticut	860-567-1802



# Participants

Table	Name	Affiliation	Location	Phone
Fri.	Barry Fell	Telos	Orem, UT	801-426-8800
Thurs.	Michael Ferguson	The Vanguard School	Florida	863-676-6091
Thurs.	Brandi Ferrebee	Goucher College	Baltimore, MD	410-337-6501
Thurs.	Jane Ferris	Laurel Springs School	Online	484-354-8623
Fri.	Elizabeth Fikes	Stonewater Adolescent Addiction Recovery Cntr	Mississippi	662-871-7912
Fri.	Sharon Findlay	Montford Hall	North Carolina	443-929-9122
	Ibrahim Firat	IECA Member	Houston, TX	713-871-1048
Fri.	Eddie Fischer	Clearfork Academy	Texas	817-259-2597
Fri.	Daniel Fishburn	Montford Hall	North Carolina	828-229-7757
Thurs.	Matthew Fisher	The Gow School	New York	716-687-2004
Fri.	Todd Fiske	Summit Preparatory School	Montana	406-758-8111
Fri.	Stacy Flaquer	Lifeskills South Florida	Deerfield Beach, FL	256-466-6771
Fri.	Maegan Flores	Vista Dimple Dell and Vista Sage	Utah	801-913-4647
	Cynthia Flowers	IECA Associate Member	Atlanta, GA	678-310-7617
Thurs.	Bernd Foecking	Hampshire Country School	New Hampshire	603-899-3325
	Amanda Fogler	IECA Mgr. of Member Outreach & Engagement	Virginia	703-591-4850
Thurs.	Eric Foley	Marquette University	Wisconsin	414-288-4087
Thurs.	Nicholas Forcier	Darrow School	New York	518-794-6003
Vendor	Karly Forman	IECA Foundation	Fairfax, VA	215-625-9955
Thurs.	Michael Foster	George Stevens Academy	Maine	207-374-2808
Thurs.	Stephanie Foulkes	Vista Life Innovations	Connecticut	860-399-8080
	Carolyn Francis	IECA Associate Member	Englewood, CO	303-564-4440
Thurs.	Caryl Frankenberger	The Greenwood School	Vermont	802-387-3800
	Geri Frazier	IECA Member	Newport Beach, CA	949-922-2991
	Lindsay Fried	IECA Associate Member	Atlanta, GA	678-561-2742
Thurs.	Scott Friedhoff	The College of Wooster	Ohio	330-263-2118
	Jared Friedland	Catalyst Prep	Austin, TX	310-909-6352
Fri.	Kristin Friesen	Sonia Shankman Orthogenic School	Illinois	773-420-2891
Fri.	AJ Frithiof	RedCliff Recovery	Utah	801-318-5951
Fri.	Nicole Fuglsang	Calo	Missouri	573-365-2221
Thurs.	Rick Funk	University of Alabama	Alabama	205-348-9679
Fri.	Angie Fusco	Aulderm Academy	North Carolina	919-837-2336
	Zach Galin	IECA Member	Middleton, WI	608-841-1053
Fri.	Shayne Gallagher	WinGate Wilderness Therapy	Utah	435-644-3654
Fri.	Sheri Gallagher	WinGate Wilderness Therapy	Kanab, UT	435-644-3654
Fri.	Caitlin Galt	Aspiro Group	Utah	801-349-2740
	Colleen Ganjian	IECA Member	Vienna, VA	703-662-3648
	Sharon Gardner	IECA Associate Member	San Diego, CA	619-980-6035
Thurs.	Amanda Garrett	Fusion Academy	Nationwide	530-356-7099
	Kathryn Garrett	IECA Member	Charlotte, NC	980-677-0311
Thurs.	Natalie Garza	Elon University	North Carolina	336-278-7668
	Eva Garza-Nyer	IECA Member	Austin, TX	512-659-1508
	Laura Gatzionis	IECA Member	Athens, Greece	30.210.8082316
	Robyn Gavrila	IECA Student Member	Houston, TX	832-370-7979
	Lauren Gaylord	IECA Member	Seattle, WA	206-669-6154
Thurs.	Krystle Gee	Blue Ridge School	Virginia	434-985-2811
Thurs.	Joseph Geier	Academy at SOAR	North Carolina	828-456-3435
Fri.	Linda Geiger	Anxiety Institute	Greenwich, CT	203-489-0888
Fri.	Seth Geisler	Catalyst	Utah	435-723-4600
	Carolyn Geldermann	IECA Member	Lake Forest, IL	847-736-1452
	Lisa Gelman	IECA Member	Hingham, MA	781-738-2402
Fri.	Anthony S. Geraci	High Frontier, Inc.	Texas	432-364-2241
Fri.	Brad Gerrard	Innercept	Idaho	801-655-3886
Fri.	Chelsea Giles	Denials Management, Inc.	Utah	866-322-0787
Fri.	Kyle Gillett	Equinox RTC	North Carolina	828-436-2200
Thurs.	Federico Glitman	Lynn University	Florida	561-901-6930
	Kurt Goedecke	IECA Associate Member	Houston, TX	713-417-3524
	Andrea Goldman	IECA Member	Plainview, NY	516-698-4829
	Elyse Goldstein	IECA Member	Valley Stream, NY	917-770-2187
	Julia Gooding	IECA Associate Member	Chappaqua, NY	802-379-8535
	Nancy Gorman	IECA Student Member	Carlsbad, CA	760-419-3961

# Participants

Table	Name	Affiliation	Location	Phone
Thurs.	Carolyn Gorowski	Lake Forest Academy	Illinois	847-615-3288
Vendor	Tascha Gourley	Independent School Management	Wilmington, DE	302-656-4944
Fri.	John Grago	Greenbrier Academy for Girls	West Virginia	304-445-7790
Thurs.	Amy Graham	Pomfret School	Connecticut	860-963-6120
	Gail Grand	IECA Member	Westlake Village, CA	818-263-7536
Thurs.	Bob Grandizio	Shady Side Academy	Pittsburgh, PA	412-968-3080
	Duffy Grant	IECA Member	Santa Cruz, CA	831-818-2492
Thurs.	Ryan Grant	Hoosac School	New York	518-686-7331
Fri.	William Grant	Squaw Valley Academy	California	334-367-8807
	Michelle Grappo	IECA Member	Denver, CO	703-887-8071
	Rebecca Grappo	IECA Member	Denver, CO	720-627-6940
	Matthew Gray	IECA Member	Evanston, IL	847-492-3434
Fri.	Peter Gray	Meadowridge Academy	Massachusetts	508-397-8272
Vendor	Kim Green	Educational Consultant Platform	Virginia	469-215-7776
	Krista Greene	Jamie Dickenson, LLC	Charleston, WV	304-556-4807
Thurs.	Lee Greener	The Williston Northampton School	Massachusetts	413-529-3214
	Hamilton Gregg	IECA Member	Beijing, China	86.101355.2041603
	Lida Griest	IECA Member	Atlanta, GA	404-239-0053
	Kathleen Griffin	IECA Associate Member	Edmonds, WA	310-480-1040
Thurs.	Suzanne Grimshaw	ScenicView Academy	Utah	801-226-2550
Thurs.	Teresa Gross	College Living Experience	6 centers - 5 states	800-486-5058
Thurs.	Meghan Grover	Millbrook School	New York	845-677-8261
	Aubrey Groves	IECA Associate Member	Austin, TX	512-347-8183
	Deborah Groves	IECA Member	Austin, TX	512-423-2775
	Dianne Grubb	IECA Associate Member	Lutherville Timonium, MD	410-299-8891
	Kendall Guess	IECA Associate Member	Leander, TX	512-633-5662
	Xin Guo	Everwood Learning Center, LLC	Beijing, China	86.13.811787267
Thurs.	Deborah Gustafson	Cushing Academy	Massachusetts	978-827-7300
Vendor	Aimee Gutowski	DreamCatcher Curriculum	Fayetteville, AR	479-419-8080
	Alan Haas	IECA Member	New Canaan, CT	203-966-6993
Fri.	Sean Haggerty	Daniels Academy	Utah	435-709-7050
Fri.	Mischele Hagood	Lindner Center of HOPE	Ohio	513-536-0326
	Gwynne Lockwood Hales	IECA Member	Northfield, IL	847-441-8911
Fri.	Brent Hall	Discovery Connections	Utah	801-374-2121
	Elizabeth Hall	IECA Member	Amesbury, MA	781-304-4716
Fri.	Jennie Hall	Heritage Community: Launch	Utah	801-226-4600
	Maite Halley	IECA Member	Miami, FL	786-372-8378
Fri.	Flora Hallows	Juniper Canyon Recovery Center for Women	Utah	435-691-1094
Fri.	Gil Hallows	Legacy Outdoor Adventures	Utah	435-836-2272
Fri.	Clark Hammond	Kaizen Academy	Utah	801-850-7803
Fri.	Dan Hanks	Northwest College Support	Idaho	208-640-0861
Fri.	Ephraim Hanks	Diamond Ranch Academy	Utah	435-635-4297
Fri.	Traci Hanks	Northwest College Support	Idaho	253-651-6377
Fri.	Anthony Hansen	Telos	Orem, UT	801-426-8800
Thurs.	Sarah Hansen	Knox College	Galesburg, IL	309-341-7129
	Makoto Harada	IECA Member	San Jose, CA	408-786-5359
Thurs.	Dana Harbert	Eagle Hill School	Massachusetts	413-477-6000
Fri.	Guy Hardcastle	Ascend Recovery - The Discover Center	Utah	877.527.2363
Thurs.	Kristin Harman	Hyde School	Maine	207-443-7101
Thurs.	Mary Dell Harrington	Grown and Flown	New York	914-772-2585
	Jon Harris	IECA Associate Member	Wynnewood, PA	610-551-5334
Thurs.	Julie Harris	The Webb School	Tennessee	931-389-5728
Thurs.	Cody Hartley	Year On	California	434-637-3789
Fri.	Kelly Hartmaier	Woods Services	Pennsylvania	215-750-4245
Fri.	Danielle Hava	Blue Ridge Therapeutic Wilderness	Clayton, GA	516-662-1494
Thurs.	Stacy Hawthorne	Davidson Academy	Nevada	970-325-3630
Fri.	Melodie Hayes	Foundation for Independent Living, Inc.	Florida	954-968-6472
	Louise Hayman	IECA Associate Member	Australia	61.4161.32131
Fri.	Kevin Hedrick	Crosswinds-Caribbean Mountain Academy	Dominican Republic	800-509-6884
Vendor	Meaghan Heffernan	Wintergreen Orchard House	Massachusetts	978-842-2749
Vendor	Drew Heilpern	Summit Educational Group	Newton, MA	617-831-4383

# Participants

Table	Name	Affiliation	Location	Phone
Fri.	Lacey Heinzelman	New Vision Wilderness Therapy	Wisconsin	715-748-0251
Fri.	Rick Heizer	Evoke at Cascades	UT and OR	435-674-9310
	Sherry Henig	IECA Member	Plainview, NY	516-933-9758
	Andrew Hennessy	Cappex	Chicago, IL	312-546-3017
Fri.	Randi Hennigan	Cascade Crest Transitions	Bend, OR	214-676-5127
Thurs.	Shelley Henry	San Marcos Academy	Texas	512-753-8006
Thurs.	Harry Herbert	Franklin University Switzerland	Lugano, Switz.	319-899-3718
Fri.	Wendy Hercliff	Meridell Achievement Center	Texas	512-517-2019
	Peggy Hersam	IECA Associate Member	Riverside, CT	203-489-6061
	James Heryer	IECA Member	Kansas City, MO	816-898-5666
	Amy Herzog	IECA Member	Highland Park, IL	847-363-9201
Fri.	Lisa Hester	Boulder Creek Academy	Idaho	877-348-0848
Fri.	Corey Hickman	Chrysalis	Montana	406-889-5577
	Debbie Hicks	IECA Associate Member	Austin, TX	512-773-2228
	Donna Hill	Class 101	Bryant, AR	501-213-0318
Thurs.	Barrie Hillman	West Sound Academy	Washington	360-598-5954
Fri.	Jack Hinman	Discovery Ranch for Girls	Utah	435-592-5529
Fri.	Matt Hoag	Evoke Therapy Programs	Utah	435-674-9310
	Tracy Hobson	IECA Member	Westfield, NJ	908-591-8657
Thurs.	David Hodgson	Vermont Academy	Vermont	802-869-6258
Thurs.	Molly Hogan	Youth for Understanding	Washington, DC	202-774-5200
Thurs.	Randall Hollensbe	St. John's College	NM and MD	505-984-6060
Thurs.	Kim Hollingsworth	Verde Valley School	Arizona	928-284-2272
	Benjamin Holloway	IECA Associate Member	Houston, TX	713-862-0737
Fri.	Jim Holsomback	McLean Hospital	Boston, MA	617-855-3417
Thurs.	Julie Holt	The Outdoor Academy	North Carolina	828-877-4349
	Karyn Holtzman	IECA Member	Irvine, CA	949-697-5428
Thurs.	Kelly Hood	Wilson Hill Academy	Austin - Virtual School	512-484-4357
	Erin Hooper	IECA Associate Member	Cody, WY	307-899-2140
Thurs.	Nancy Hopkins	Riverview School	Massachusetts	508-888-0489
Fri.	Tracy Hopkins	Outback Therapeutic Expeditions	Utah	828-337-3692
Thurs.	Susie Horan	Chapel Hill-Chauncy Hall School	Massachusetts	781-314-0862
Thurs.	Christi Howard	Brandon Hall School	Atlanta, GA	770-394-8177
	Aihua (Jessica) Huang	IECA Member	Weehawken, NJ	347-782-3585
	Jordan Huang	Uni-Ed, Inc.	Dublin, CA	408-931-4789
	Rong Huang	Centennial Education	Guangzhou, China	267-251-1596
Fri.	Rick Hubbard	Origins Behavioral HealthCare	FL & TX	561-841-1210
Vendor	Bryce Hubner	ArborBridge	Los Angeles, CA	424-291-2734
	Sherry Humphrey	IECA Associate Member	Stilwell, KS	913-221-3525
Thurs.	Neal Humphreys	University of Hartford/The Hartt School	Connecticut	860-768-4148
Fri.	Leigh-Anne Husted	The Experiential Healing Institute	Nationwide	352-362-4088
Thurs.	Jill Hutchins	Dublin School	New Hampshire	603-563-1233
	Margot Hutchison	IECA Student Member	San Diego, CA	619-857-4579
	Russell Hyken	IECA Member	St. Louis, MO	314-691-7640
Thurs.	Kelly Ibarra	University of Houston	Houston, TX	713-743-5934
	Tony Isenmann	Open Sky Wilderness Therapy	Colorado/Utah	970-382-8181
Fri.	Gay Jackson	New Roads Behavioral Health	Utah	801-857-5539
	Margaret Jackson	IECA Associate Member	Marblehead, MA	781-405-2947
Fri.	TyJha Jackson	University of Utah Neuropsychiatric Inst.	Utah	801-581-6987
Fri.	Kari Jacobson	Center for Change	Utah	801-419-1935
Fri.	Betsy Jacobson Warren	Academy at Sisters	Oregon	541-389-2748
Thurs.	Deiana Jacqueline	Berkshire Hills Music Academy	Massachusetts	413-540-9720
Thurs.	Shannon Jakes	Verde Valley School	Arizona	406-212-6078
Thurs.	Jennifer Jansen	Scattergood Friends School	Iowa	641-780-9604
	Xiaoguang Jiang	Future IntEdu Center	New York, NY	347-698-8300
	Jing Jing	IECA Member	Waltham, MA	781-790-8583
Thurs.	Carol Johnson	Muskingum University PLUS Program	Ohio	740-826-8280
	Kelley Anne Johnson	IECA Associate Member	Minneapolis, MN	320-220-2356
	Todd Johnson	IECA Member	Lakeville, MN	320-262-9955
	Darla Jones	IECA Student Member	Pflugerville, TX	512-999-4630
Fri.	Ethan Jordan	Lifeskills South Florida	Deerfield Beach, FL	404-323-1199



# Participants

Table	Name	Affiliation	Location	Phone
	Rebecca Joseph	IECA Member	Los Angeles, CA	323-646-5759
Thurs.	Marnique Jourdan-Davis	Johnson & Wales University	RI, NC, FL, CO	254-466-7432
Thurs.	Alexis Jungdahl	EF International Language Campuses	Cambridge, MA	617-619-1949
Fri.	Carrie Kaarre	Chrysalis	Montana	406-889-5577
Fri.	Jamie Kaczmarek	Aspiro Group	Utah	801-349-2740
	Julie Kaewert	IECA Member	Niwot, CO	720-530-5651
	Lindy Kahn	IECA Member	Houston, TX	713-668-2609
	Reena Kamins	College, Career & Life LLC	Flemington, NJ	347-683-5470
	Kyle Kane	IECA Member	Seabrook Island, SC	240-432-0377
	Debbie Kanter	IECA Member	Highland Park, IL	847-609-6112
Thurs.	Kristen Kaschub	Besant Hill School	California	805-646-4343
Vendor	Alan Katzman	Social Assurity LLC	Valley Cottage, NY	908-342-2236
Thurs.	John Kaufman	Middlebridge School	Rhode Island	401-788-0800
	Marilyn Kaufman	IECA Member	Dallas, TX	214-356-0529
	Jeana Kawamura	IECA Member	Newport Beach, CA	949-646-1165
	Marcie Kay	IECA Student Member	Woodside, CA	415-999-0712
Fri.	Cheryl Kehl	Corner Canyon Recovery	Draper, UT	801-201-8193
Fri.	Laura Kemper	Gateway Academy, LLC	Utah	385-252-9688
Fri.	Ted Kempf	Meristem	Northern California	916-963-1100
Vendor	Colene Kennelly	Wintergreen Orchard House	Massachusetts	978-842-2785
	Rebecca Kenney	IECA Member	Brookline, MA	617-734-3700
	Jennie Kent	IECA Member	Bogota, Colombia	57.1.347.3780
	Deborah Keown	IECA Associate Member	Niwot, CO	720-470-4020
Fri.	Kristi Kettle	Sober College	California	818-963-5572
Thurs.	Melinda Khachaturian	College Living Experience	6 centers - 5 states	800-486-5058
Thurs.	Amy Kice	St. Edward's University	Austin	512-448-8508
Vendor	Kolbie Kiefer	Online Behavior Analysis	Austin, TX	830-329-6502
	Jennifer Kim	Elite Educational Institute	Worldwide	818-831-4422
Thurs.	Matthew Kim	Eagle Hill School	Massachusetts	413-477-6000
	Elaine King	IECA Associate Member	Carlsbad, CA	760-544-3414
	Rachel King	IECA Conference Manager	Virginia	703-591-4850
Fri.	Steve Kirk	Evoke Therapy Programs	Utah & Oregon	801-368-0120
Thurs.	Jason Kirschner	EF Academy New York	New York	914-495-6028
	Penny Klein	IECA Member	Essex Junction, VT	802-825-1722
	Stephanie Klein Wassink	IECA Member	Wilton, CT	203-938-3878
	Jane Klemmer	IECA Member	Briarcliff Manor, NY	914-941-2219
	Carolyn Kocurek	Academic Answers	Austin, TX	512-306-8567
	Chris Kocurek	IECA Member	Austin, TX	512-306-8567
Fri.	Michelle Kohut	Wediko Summer Program	New Hampshire	603-212-8185
Thurs.	Brian Konik	The Gunnery	Connecticut	860-868-7334
Fri.	Brian Konik	Pacific Quest	Hawaii	808-365-3853
Thurs.	Donna Konkolics	Maplebrook School	New York	845-373-9511
	David Korb	IECA Associate Member	Boston, MA	617-585-9589
	Joan Koven	IECA Member	Havertown, PA	610-446-0548
Vendor	Karyn Koven	LanguageBird	Online	844-700-2473
Thurs.	Mike Kowalchick	Forman School	Connecticut	860-567-1849
Thurs.	Ilyena Kozain	Proctor Academy	New Hampshire	603-735-6304
	Carole Kraemer	IECA Associate Member	Moorestown, NJ	856-296-2882
Fri.	Adie Krambule	Uinta Academy	Utah	435-245-2600
Thurs.	Hillary Kramer	Rock Point School	Vermont	802-863-1104
	Kathy Kurzman	IECA Associate Member	Austin, TX	214-663-3089
	Heejung Laird	IECA Student Member	Nashville, TN	615-719-4130
Fri.	Bill Lane	Bill Lane & Associates Adolescent Transports	California	858-488-5319
Fri.	Sharon Laney	InnerChange	Utah	256-218-0108
	Sarah Langford	IECA Associate Member	Chicago, IL	773-307-6309
	Faith Laroche	IECA Associate Member	Brea, CA	657-242-5467
Fri.	Jon Larsen	CERTS Mountain Springs Prep Academy	Utah	435-691-0245
Fri.	Jordan Larsen	Catalyst	Utah	801-243-5869
	Julia Larson	IECA Associate Member	Winter Park, FL	386-473-9788
Thurs.	Matthew LaSota	The Oxford Academy	Connecticut	860-399-6247
Fri.	Joyce Latimer	Skyland Trail	Atlanta, GA	215-565-5241

# Participants

Table	Name	Affiliation	Location	Phone
Fri.	Lars Latimer	Logan River Academy	Utah	435-755-8400
	Katrin Lau	IECA Member	Houston, TX	713-443-5400
Thurs.	Andrew Laue	Webster University	Missouri	314-246-7712
	Ruby Laufer	IECA Member	Little Silver, NJ	732-804-4919
Fri.	Beth Laughlin	360	National	919-428-0048
Thurs.	Jenn Le Blanc	Summer Discovery & Discovery Internships	Nationwide	516-621-3939
	Catherine Leary	School Placement Solutions	Cary, NC	919-720-0635
Thurs.	Sara Lynn Leavenworth	The Gunnery	Connecticut	860-350-0165
Vendor	Jim Lee	Rallyest	Alpine, UT	801-319-9138
	Jinna Lee	IECA Associate Member	Irvine, CA	949-387-2225
	Timothy Lee	IECA Member	Wayland, MA	978-460-0945
Thurs.	Will Leedy	Salisbury School	Connecticut	860-435-5742
	Kristin Leffler	IECA Associate Member	Lake Forest Park, WA	206-419-7445
Thurs.	Grant Leibersberger	Mansfield Halll	Vermont	802-440-0532
Fri.	Earle Leitch	Waypointe	New Jersey	201-741-8281
Thurs.	Charlie Leizear	Occidental College	Los Angeles, CA	323-259-1463
	Christine LeMaire	TeenLife	Boston, MA	617-277-5120
	Grayson Lemmond	IECA Associate Member	Atlanta, GA	404-239-0053
	Karl Lenss	IECA Associate Member	Chicago, IL	847-999-4065
	Gena Lester	IECA Member	Ft. Worth, TX	817-223-4211
Thurs.	Allison Letourneau	The White Mountain School	New Hampshire	603-444-2928
	Barbara Leventhal	IECA Member	Boca Raton, FL	305-469-0365
Thurs.	Shannon Leventhal	Middlebridge School	Rhode Island	401-788-0800
Thurs.	George Levesque	EF Gap Year	Massachusetts	617-619-1241
	Jeff Levy	IECA Member	Santa Monica, CA	310-365-1241
	Tali Levy	IECA Student Member	San Mateo, CA	408-317-8476
	Suzanne Lewis	IECA Associate Member	Chandler, AZ	480-389-4859
	Bingguang Li	IECA Member	Frederick, MD	229-395-8116
	Yin (Eva) Li	IECA Associate Member	Cambridge, MA	919-308-2099
	Chester Lien	Arrowhead Ranch	Illinois	309-799-7044
Thurs.	Hattie Linam	College Living Experience	6 centers - 5 states	800-486-5058
Vendor	Andrea Lindquist	GuidedPath/PlanMyCollege	California	720-317-8836
	Alice Lissarrague	IECA Member	Shelburne, VT	802-505-6933
	Qian (Nancy) Liu	IECA Member	Beijing, China	86.10.66218818
Thurs.	Christopher Loftus	Eaglebrook School	Massachusetts	413-531-2830
	Karen Long	The Dromgoole Center For Admission	Concord, MA	978-369-7640
	Sandy Longworth	IECA Associate Member	Geneva, IL	331-248-1048
Vendor	Whitney Longworth	Summit Educational Group	Newton, MA	203-716-6370
	Allison Lopour	IECA Associate Member	Irvine, CA	949-417-1299
Fri.	Janet Loren	IECA Member	North Bergen, NJ	201-854-8282
	Carl Lovejoy	Mountain Valley Treatment Center	New Hampshire	603-989-3500
	Audrey Ludemann	IECA Member	Wilton, CT	203-762-7401
Thurs.	Elizabeth Ludovico	Quinnipiac University	Connecticut	203-582-3457
	Ryan Luse	IECA Member	Eagan, MN	651-888-2840
	Scott Lutostanski	Galín Education	Middleton, WI	608-841-1053
Fri.	Lorraine Lyman	Savvy Success Unlimited	Oakland, CA	510-768-7922
	Tim Lyttge	Meristem	Northern California	916-963-1000
	Anjali Maazel	IECA Associate Member	Pflugerville, TX	512-203-2012
Thurs.	Karen Mabie	IECA Member	Glencoe, IL	847-242-0865
	David Macauley	Thrivent Financial	Nationwide	512-417-8527
Fri.	Barclay Mackinnon	Oliverian School	New Hampshire	802-384-7126
Fri.	Iris Maclean	Newport Academy	CT, NY, CA	203-977-7178
Fri.	Leah Madamba	Vive	National	828-243-0910
Vendor	Anji Maddox	Next Step Youth Transport Services	Round Rock, TX	512-853-9525
Thurs.	Jeffrey Magnoli	Maplebrook School	New York	845-373-8191
Fri.	Tom Maisel	Pasadena Villa	FL, TN	312-550-6547
Thurs.	Judith Maizlish	Independence Center	Los Angeles, CA	310-202-7102
	Kate Malczewski	IECA Member	Minneapolis, MN	952-303-3696
	Jennifer Mandel	IECA Member	Los Angeles, CA	310-441-9333
	Neeraj Mandhana	IECA Associate Member	Mumbai, India	91.98200.77111
	Amy Markham	Mount Holyoke College	Massachusetts	413-538-2023

# Participants

Table	Name	Affiliation	Location	Phone
	Terri Markwart	M2 Education Connections	McLean, VA	571-970-4584
Thurs.	Micah Marroquin	Baylor University	Texas	254-710-3435
	Catherine Marrs	IECA Member	Dallas, TX	214-350-8581
	Carolyn Marsan	IECA Associate Member	Brookfield, WI	847-441-8687
Fri.	Deveney Marshall	New Leaf Academy	Oregon	541-318-1676
Fri.	Amanda Martell	Lakemary Center	Kansas	913-416-5175
Thurs.	Andrew Marvin	Beacon College	Florida	352-552-1112
Thurs.	Rachel Masson	Beacon College	Florida	352-552-1112
Thurs.	Rebecca Mather	Tivnu: Building Justice	Portland, OR	971-282-5211
Fri.	Brad Matheson	WinGate Wilderness Therapy	Utah	909-816-4920
Fri.	Kade Mathews	Diamond Ranch Academy	Utah	435-635-4297
	Allison Matlack	IECA Member	Needham, MA	781-640-7360
	Jill Mattos	IECA Associate Member	Roswell, GA	404-217-8530
	Londa May	IECA Member	The Woodlands, TX	281-364-9700
Fri.	Tanya May	Youth Care	Utah	801-572-6989
	Michelle McAnaney	IECA Associate Member	Bethel, ME	207-593-6837
Thurs.	Travis McArthur	College Internship Program (CIP)	Massachusetts	877-566-9247
Thurs.	Kathy McCann	South Kent School	Connecticut	860-927-3539
	Kevin McCarthy	Illuminate Education Group	Danville, VT	802-535-7850
Thurs.	Greg McConnell	Bishop's College School	Quebec, Canada	819-566-0227
Vendor	Cyndy McDonald	GuidedPath/PlanMyCollege	California	559-636-3605
	Cyndy McDonald	IECA Member	Visalia, CA	559-636-3605
Fri.	Elizabeth McGhee	Sandhill Child Development Center	New Mexico	505-866-9271
Fri.	Joseph McGill	Villa Santa Maria	New Mexico	505-281-3609
Thurs.	Jacqui McIntosh	Keele University	England	44.1782.733244
Fri.	Meagan McKean Taylor	Pure Life Adventure	Costa Rica	617-605-5827
	Elizabeth McLaughlin	IECA Associate Member	Fort Atkinson, WI	920-222-9439
Fri.	Cynthia McLean	HopeWay	North Carolina	704 604-1915
	Lee McLendon	IECA Member	Waterbury Center, VT	802-244-0606
	Don McMillan	IECA Member	Boston, MA	617-536-4319
	Sarah McMillan	IECA Member	Boston, MA	617-536-4319
Fri.	Jenn McMurry	Solstice Journey Home West	Utah	801-336-0753
Thurs.	Patty McPhie	Laurel Springs School	Online	484-653-2923
Vendor	Frank McWilliams	Method Test Prep	Plainview, NY	970-980-5887
	Stephanie Meade	IECA Member	Studio City, CA	818-761-7002
Thurs.	Lexi Meador	University of Arkansas	Fayetteville, AR	479-200-8569
	Dave Means	Dunbar Educational Consultants	New Canaan, CT	203-972-0730
Thurs.	Candi Medeiros	The Vanguard School	Florida	863-676-6091
	Amy Mednick		Rochester, NY	585 362 6520
Fri.	David Melear	Newport Academy	California	714-453-7519
Fri.	Mark Mellusi	The Discovery School of Virginia	Virginia	434-983-5616
	Amy Mendelson	IECA Member	Trabuco Canyon, CA	949-280-2228
	Shyamla Menon	IECA Associate Member	Darien, CT	203-656-1417
Fri.	Courtney Merrill	True North Wilderness Program	Vermont	202-494-0667
	Justin Merritt	IECA Associate Member	Chapel Hill, NC	919-440-6298
	Kathryn Meyer	IECA Member	Park City, UT	435-640-8779
Thurs.	Julie Middleton	Hebron Academy	Maine	207-966-5228
	Melissa Mieyr	Ducerus, Inc.	Carlsbad, CA	760-607-9925
	Stephen Migden	IECA Member	Plainview, NY	516-625-0824
	Stefanie Miles	IECA Member	Huntsville, AL	256-541-7755
Thurs.	Drew Miller	Cranbrook Schools	Michigan	248-645-3153
Thurs.	Jamie Miller	Blue Ridge School	Virginia	434-985-2811
Thurs.	Kelsey Miller	Washington College	Maryland	410-778-7700
Fri.	Jordan Mills	Alpha 180	Texas	512-693-1603
Thurs.	Graydon Mitchell	The Leelanau School	Michigan	231-334-5826
Fri.	Soriah Mitchell	Greenbrier Academy for Girls	West Virginia	509-638-7757
Thurs.	Heidi Molbak	FlexSchool	CT and NJ	203-628-4018
	Ann Montgomery	IECA Member	Houston, TX	713-520-5522
Thurs.	Mercer Ann Moon	The University of Mississippi	Mississippi	469-410-4855
Vendor	Elaine Moore	College Success Plan	Hinsdale, IL	630-363-4316
Thurs.	Erin Moran	High Point University	North Carolina	336-841-9722



# Participants

Table	Name	Affiliation	Location	Phone
Fri.	Kelsey Morell	PRN for families	Colorado	720-254-4549
	Darlene Morgan	Morgan College Consultants	San Antonio, TX	713-377-1956
	Elaine Morgan	IECA Member	Orlando, FL	407-636-1004
	Elisabeth Morgan	IECA Member	Madison, CT	203-245-1712
Fri.	Rujon Morrison	Shelterwood	Independence, MO	816-249-5352
	Laurence Moses	IECA Education Assistant	Virginia	703-591-4850
	Martha Moses	IECA Member	Miami, FL	305-273-0014
Fri.	Tony Mosier	Telos U	Orem, UT	801-380-8830
Fri.	Shelly Moss	Shelterwood	Missouri	817-403-2220
	Chrissy Mossbarger	IECA Associate Member	Ladera Ranch, CA	949-350-5936
	Jing Mu	IECA Associate Member	Charlottesville, VA	617-401-1306
	Judy Muir	IECA Member	Houston, TX	713-819-5400
Fri.	Malia Mullahey	Ohana House	Oregon	541-408-6873
	Carolyn Mulligan	IECA Member	Summit, NJ	908-277-3754
	Grace Mulliken	IECA Member	Westport, CT	203-247-6597
Thurs.	Alex Munoz	Southern Methodist University	Texas	214-768-8464
Thurs.	Jen Murphree	Rainbow Acres	Arizona	928-567-5231
Thurs.	Colleen Murphy	Cornell College	Iowa	319-895-4215
Fri.	James Murray	Breakthrough Interventions	National	413-268-7022
	Caitlin Myers	IECA Membership Associate	Virginia	703-591-4850
Fri.	Mollie Mylar	Visions Adolescent Treatment Centers	California	801-201-8717
Fri.	Lindsay Myrick	BlueFire Wilderness Therapy	Idaho	208-934-4444
	Kristen Naspo	IECA Member	Simsbury, CT	401-965-0075
Thurs.	Lynne Neaves	GAP Year at SOAR	North Carolina	828-456-3435
Fri.	Tim Ned	Fulshear Treatment to Transition	Texas	346-302-7263
	Patricia Nehme	IECA Member	Austin, TX	512-694-9544
	Kate Neiss	IECA Associate Member	Eden Prairie, MN	312-909-7974
Fri.	Emily Nelson	Cherokee Creek Boys School	South Carolina	864-647-1885
	Lisa Nelson	IECA Member	New Canaan, CT	203-972-0730
Thurs.	Erin Nester	Wasatch Academy	Utah	435-462-1415
Thurs.	Bill Newman	Hillside School	Massachusetts	508-303-731
Vendor	Nicole Newquist	ArborBridge	Los Angeles, CA	424-744-7185
Thurs.	Cameron Newton	University of Cincinnati	Ohio	469-449-7658
	Gail Nichols	IECA Associate Member	Trabuco Canyon, CA	949-229-1287
Fri.	Amy Nimmo	Montana Academy	Montana	406-261-5201
	Olivier Nizeyimana	IECA Associate Member	Bartonville, TX	614-440-4770
Thurs.	Joanna Nolting	The American University of Paris	Paris, France	33.1.40.62.07.20
	Catherine Noonan	IECA Associate Member	San Francisco, CA	724-422-8082
Vendor	Angela Noronha	Cialfo - College Guidance Platform	Singapore	659-831-7040
Thurs.	Ann Norton	Culver Academies	Indiana	574-842-8460
Fri.	Meg Nygren	Red Oak Recovery	Asheville, NC	828-231-0097
	Margot O'Connor	IECA Student Member	Rumson, NJ	646-825-1429
Vendor	Charlie O'Hearn	Summit Educational Group	Newton, MA	617-831-4385
	Patricia O'Keefe	IECA Member	Capistrano Beach, CA	949-370-4938
Fri.	Brendan O'Neil	Valley View School	Massachusetts	508-867-6505
	Marilyn O'Toole	IECA Member	Pacific Palisades, CA	626-221-8787
Fri.	Lara Oakley	Pacia Life	Utah	801-859-2066
Fri.	Randy Oakley	Pacia Life	Utah	385-200-0799
Fri.	Christine Odusola	Pasadena Villa	FL & TN	832-212-3333
Fri.	Mark Oerther	Red Oak Recovery	North Carolina	828-301-1110
Vendor	Laura Olsen	BestNotes	Idaho	855-489-1792
Vendor	Nathan Olsen	BestNotes	Idaho	855-489-1792
Fri.	Jody Olson	Forest Heights Lodge	Colorado	303-674-6681
Fri.	Jeanna Osborn	Calo Programs	Virginia	573-365-2221
Fri.	Norm Ostrum	Sonia Shankman Orthogenic School	Illinois	773-420-2866
Fri.	Paul Otis	Squaw Valley Academy	California	530-386-3659
Fri.	Monique Otufangavalu	Fulshear Treatment to Transition	Texas	801-891-5966
Fri.	John Outland	The Discovery School of Virginia	Virginia	434-983-5616
Fri.	Mik Oyler	Shortridge Academy	New Hampshire	603-986-3356
	Christine Paige	In+Sight Learning	Walpole, MA	339-222-1518
	Lisa Paige	IECA Associate Member	Walpole, MA	774-571-1761

# Participants

Table	Name	Affiliation	Location	Phone
Fri.	Shannon Palentchar	Summit Achievement	Stow, ME	207-697-2020
	Marylee Palmer	IECA Associate Member	Lexington, MA	617-633-5767
	Qimei Pan	IECA Student Member	Niskayuna, NY	518-312-8872
	Wilton Paogofe	IECA Associate Member	Cave Creek, AZ	808-443-1877
Thurs.	Stefano Papaleo	Lynn University	Florida	561-237-7900
	Lloyd Paradiso	IECA Member	West Chester, PA	267-975-7580
Fri.	Brandon Park	New Focus Academy	Heber City, UT	801-471-9289
Fri.	Dale Parker	The High Frontier	Texas	432-364-2241
Thurs.	Elizabeth Parker	Landmark School	Massachusetts	978-236-3213
Fri.	Jennifer Parker	New Leaf Academy	Oregon	541-318-1676
Fri.	Tom Parker	Lindner Center of HOPE	Mason, OH	513-536-0308
Fri.	Enrique Parrales	Pure Life Aspiro	Costa Rica	801-896-9490
Thurs.	Kim Parrett	Sacred Heart University	Connecticut	203-610-9500
	Christopher Parsons	IECA Member	Surfside Beach, SC	855-442-4222
Fri.	Dia Parsons	Avalon Malibu	California	310-457-9111
	Anastasi (Taz) Pasalis	IECA Associate Member	Cleveland, OH	440-823-0389
	Barbara Pasalis	IECA Member	Cleveland, OH	440-570-7030
Vendor	Rohan Pasari	Cialfo - College Guidance Platform	Singapore	659-723-8594
Fri.	Jennifer Patzke	Dragonfly Transitions	Oregon	541-678-8687
Thurs.	Marcus Payzant	Massachusetts College of Art and Design	Boston, MA	617-879-7204
Fri.	Audrey Peavey	Vive	National	304-642-1980
	Lori Peoples	IECA Associate Member	Castle Pines, CO	303-218-5200
Thurs.	Lisa Pelrine	Chapel Hill-Chauncy Hall School	Massachusetts	781-314-0808
Fri.	Ryan Pepper	Vista Dimple Dell	Utah	801-910-5894
Thurs.	Kirsten Perdue	Brandon Hall School	Atlanta, GA	770-394-8177
Fri.	Anya Perea	Meristem	Northern California	916-963-1000
	Elyssia Perez	IECA Associate Member	Temecula, CA	951-366-0696
Fri.	Chris Perkins	Calo	Missouri	573-365-2221
	Sarah Persha	IECA Member	Bend, OR	541-815-8474
Fri.	Ian Petersen	The Heritage Community	Utah	801-226-4600
	Marilyn Petrequin	IECA Member	Portland, OR	503-223-4429
Thurs.	Jo Anne Phang	Syracuse University	New York	315-443-1594
Thurs.	Jennifer Phillips	OPTIONS Transitions to Independence	Illinois	618-549-4201
Thurs.	Alia Piatos	USA Gap Year Fairs	Massachusetts	508-755-2571
Thurs.	Douglas Piehl	Thrivent Financial	Nationwide	920-628-4180
Thurs.	Lindsay Pike	Bard College	New York	845-763-3000
Thurs.	Brileigh Pinkney	Foxcroft School	Virginia	540-687-4344
Thurs.	Julia Pitassy	Trinity College	Connecticut	860-297-2553
	Marla Platt	IECA Member	Sudbury, MA	978-440-8210
	Julie Pohl	IECA Associate Member	Darnestown, MD	301-467-8801
Fri.	Rick Pollard	Solstice East	North Carolina	828-545-5556
	Arun Ponnusamy	Collegewise	Los Angeles, CA	323-533-8279
Fri.	Dean Porterfield	Cumberland Heights	Nashville, TN	615-604-2398
Thurs.	Scott Pottbecker	Winchendon School	MA & NY	978-297-4476
Thurs.	Doc Potter	The Bement School	Massachusetts	413-774-4209
Fri.	Shauna Pounders	The King's Daughters' School	Tennessee	931-388-3810
Thurs.	Matt Powers	Naropa University	Colorado	303-546-3528
Thurs.	Mallory Pratt	P.A.C.E. at National Louis University	Chicago, IL	312-261-3281
Fri.	Nikki Preece	Fulshear Treatment to Transition	Texas	801-631-3064
Fri.	Christin Prestwich	New Haven	Spanish Fork, UT	801-794-0845
Fri.	Darren Prince	Ashcreek Ranch Academy	Utah	435-215-0500
Thurs.	Tiffany Prior	College Living Experience	6 centers - 5 states	800-486-5058
	Lucy Pritzker	IECA Member	Westfield, NJ	908-228-2212
Vendor	Elizabeth Pyle	College Success Plan	Hinsdale, IL	630-481-6153
	Qimei Qiu	IECA Associate Member	Shenzhen, China	86.13723.700737
	Jesse Quam	IECA Member	Black Mountain, NC	828-423-6469
Vendor	Allegra Quercia	YouScience	Nashville, TN	615-850-1830
Thurs.	Fred Quick	College of Charleston	South Carolina	843-953-0416
Thurs.	Matthew Quinn	St. Thomas More School	Connecticut	860-859-1900
	Luisa Rabe	IECA Member	Haverford, PA	610-896-9522
Thurs.	Beth Rainey	The Kildonan School	New York	845-373-2017

# Participants

Table	Name	Affiliation	Location	Phone
	Allyson Randall	College MatchPoint	Austin, TX	512-243-6181
Fri.	Kevin Randall	Fulshear Treatment to Transition	Texas	801-301-9514
Fri.	Adam Ray	Foundations Asheville	North Carolina	828-817-9520
Fri.	Patty Raymer	Burning Tree Programs	Texas	830-377-1352
Thurs.	Tricia Realbuto	John Cabot University	Rome, Italy	39.06.681.9121
	Amy Reardon	Amy Reardon College Advising	Atherton, CA	650-815-8870
Fri.	Danny Recio	The Bridge Supportive Gap - Costa Rica	Costa Rica	800-609-9496
Thurs.	Char Reed	OPTIONS Transitions to Independence	Illinois	618-549-4201
Fri.	Brad Reedy	Evoke Therapy Programs	Utah & Oregon	801-201-8196
Thurs.	Whitney Regian	Fusion Academy Dallas	Dallas, TX	214-363-4615
Vendor	Howard Reichman	EssayDog	Montvale, NJ	917-660-0766
Fri.	Alan Reiman	Meridell Achievement Center	Texas	512-517-2774
Fri.	Daryn Reiner	Discovery Ranch for Girls	Utah	435-592-5529
Fri.	Kathy Rex	BlueFire Wilderness Therapy	Idaho	208-308-3163
	Amy Rich	IECA Member	Trumbull, CT	203-209-2345
Thurs.	Jen Richard	The College Experience	New York	518-218-0000
	Julie Richie	IECA Student Member	Austin, TX	512-243-6181
	Jennifer Richmond	IECA Associate Member	Austin, TX	737-222-5185
	Cathy Richter	IECA Associate Member	Freeport, FL	314-954-3213
Thurs.	Michael Riendeau	Eagle Hill School	Massachusetts	413-477-6000
Thurs.	Rachel Ristow	University of Richmond	Virginia	804-289-8640
Thurs.	Gillian Ritter	Canterbury School	Connecticut	860-210-3835
Thurs.	Derrith Roberson	Asheville School	North Carolina	828-254-6345
Thurs.	Kari Roberts	Grand River Academy	Ohio	440-275-2811
	Jason Robinovitz	IECA Member	Coral Springs, FL	954-510-0600
	Daria Rockholz	IECA Member	Greenwich, CT	203-313-0734
Fri.	Anamarie Rodabough	CERTS Kolob Canyon/Moonridge Academy	Utah	435-383-3530
Fri.	Craig Rodabough	CERTS Kolob Canyon/Moonridge Academy	Utah	801-633-3653
Fri.	Curby Rogers	Fulshear Treatment to Transition	Texas	612-388-1132
Thurs.	JD Rogers	Marianapolis Preparatory School	Connecticut	860-923-9245
	Dana Rolander	IECA Associate Member	Terrace Park, OH	513-284-1249
	Elisa Romero	IECA Associate Member	San Francisco, CA	415-314-1654
	Jessica Romeyn	IECA Member	Los Angeles, CA	323-362-2934
Fri.	Nanette Rondeau	Cardinal Cushing Centers	Massachusetts	781-829-4672
Thurs.	Brian Rose	Eaglebrook School	Massachusetts	413-774-7411
Thurs.	Gaelyn Rose	Lawrence University	Appleton, WI	920-832-6889
Fri.	Jesse Rosenbluth	Shrub Oak International School	New York	914-885-1995
	Ann Rossbach	IECA Member	Rumson, NJ	732-539-0848
	Elliot Rossbach	Ann Rossbach Educational Consulting	Rumson, NJ	732-737-4821
Fri.	Sarah Rothstein	Aspiro Group	Utah	801-349-2740
Fri.	Jude Rudolph	Pasadena Villa	Tennessee, FL	303-330-1126
Fri.	Patricia Ruggles	PRN for Families	Colorado	720-254-4549
	Wendy Rupp	Collegiate Coordinates LLC	Plano, TX	214-728-3744
Thurs.	Randy Russell	InnerPathWorks	Idaho	509-671-1598
Fri.	Betty Ann Rutherford	Fulshear Treatment to Transition	Texas	832-768-3564
Thurs.	Matthew Rutherford	Clarkson School	New York	315-268-4425
Thurs.	Rich Ryerson	Kimball Union Academy	New Hampshire	603-469-2106
Thurs.	Claudia Salinas	University of Rochester	New York	585-705-2590
Thurs.	Christopher Salute	Long Island University	New York City	516-353-7182
Thurs.	Lawrence Sampleton	St. Stephen's Episcopal School	Austin, TX	512-327-1213
Fri.	Della Sandler	Fulshear Treatment to Transition	Texas	818-914-8151
Fri.	Helaine Sandler	Fulshear Treatment to Transition	Texas	818-917-4861
Fri.	Kaci Sapinski	New Vision Wilderness Therapy	Wisconsin	715-748-0251
Vendor	Devon Sawyer	College Essay Guy	Los Angeles, CA	917-701-1541
	Ethan Sawyer	IECA Assoc. Member/College Essay Guy	Los Angeles, CA	917-701-1541
Fri.	Steve Sawyer	New Vision Wilderness Therapy	OR, WI, SE US	414-940-6613
	Patti Schabinger	IECA Member	Northbrook, IL	847-272-5758
Vendor	John Schaeffer	Online Behavior Analysis	Austin, TX	512-306-8567
Vendor	Brad Schiller	Prompt	New York City	844-577-6678
	Marci Schwartz	IECA Associate Member	Los Gatos, CA	408-356-6510
Fri.	Jamey Seabrook	Elements Wilderness	Utah	435-691-5228

# Participants

Table	Name	Affiliation	Location	Phone
Fri.	Marcy Seaman	Lakemary Center	Kansas	913-557-4000
Thurs.	John Seaward	Rectory School	Connecticut	860-928-1328
Fri.	Lauren Seltzer	Grove School	Connecticut	203-245-2778
	Renee Serrano	IECA Associate Member	North Andover, MA	978-697-8767
	Melissa Shanahan	IECA Member	Boulder, CO	303-588-9851
Fri.	Graham Shannonhouse	Trails Carolina	North Carolina	828-885-5920
Thurs.	Katelynn Shea	Dynamy Internship Year	Worcester, MA	508-755-2571
Thurs.	Kelly Sheehan	Pomfret School	Connecticut	860-963-6133
Fri.	Brian Shepherd	Right Direction Crisis Intervention	USA	888-592-8400
Fri.	Julie Sheppard	Solstice West RTC	Layton, UT	801-809-4690
Fri.	Holly Sherman	The Haven at College	Nationwide	310-822-1234
Fri.	Leah Shingler	Evoke Therapy Programs	Utah & Oregon	801-550-8971
Vendor	Bill Sholar	Educational Consultant Platform	Virginia	877-888-7850
Fri.	Carla Shorts	Black Mountain Academy	North Carolina	828-767-5509
Fri.	Carrie Shoumatoff	Bridge House	Utah	435-640-7552
Fri.	Jordan Siegel	Lake House Academy	North Carolina	828-355-4595
Fri.	Tiffany Silva	Oxbow Academy East	Utah	435-436-9464
Fri.	Becky Simpson	Uinta Academy	Utah	435-245-2600
Fri.	Jeff Simpson	Uinta Academy	Utah	435-245-2600
Thurs.	Glenn Singer	Springdale Preparatory School	Maryland	855-405-8600
Fri.	John Singleton	Whetstone Academy	South Carolina	864-638-6005
	Mark Sklarow	IECA Chief Executive Officer	Virginia	703-591-4850
Thurs.	Kait Skogstad	Landmark College	Vermont	802-387-1676
Fri.	Travis Slagle	Pacific Quest	Hawaii	808-345-1829
Fri.	Yvette Slagle	Pacific Quest	Hawaii	808-345-4549
Thurs.	Alison Slater	Denison University	Ohio	740-587-6625
Fri.	Allyson Smith	Fulshear Treatment to Transition	Texas	801-420-5739
Thurs.	Andrea Nicole Smith	University of Colorado-Colorado Springs	Colorado	817-907-2790
Fri.	Blake Smith	Trails Momentum	North Carolina	828-793-0071
Fri.	Craig Smith	Discovery Ranch	Utah	801-489-3311
Thurs.	Erin Smith	Florida Southern College	Florida	832-761-0485
Fri.	Heidi Smith	Chapter House	Texas	972-567-4280
Fri.	Jane Smith	RedCliff Ascent	Enterprise, UT	801-318-5951
	Lisa Smith	IECA Associate Member	Atlanta, GA	404-977-3759
	Liz Smith	IECA Associate Member	Wilmington, NC	910-795-9150
Thurs.	Maureen Smith	The Marvelwood School	Connecticut	860-927-0047
Fri.	Veronica Smith	Rose Hill Center	Michigan	248-531-0355
Fri.	Tracine Smoot	PsychSolutions	Utah	801-824-0825
	Tere Snodgrass	Open Sky Wilderness Therapy	Colorado/Utah	970-382-8181
Thurs.	Victoria Sobocinski	West Nottingham Academy	Maryland	410-658-4901
Fri.	Fotu Soliai	Sedona Sky Academy	Arizona	928-567-1322
	Teri Solochek	IECA Member	West Hills, CA	818-348-8248
Thurs.	Sharona Sommer	College Internship Program	Massachusetts	877-566-9247
Fri.	Kaysha Sorensen	CERTS Kolob Canyon/Moonridge Academy	Utah	801-318-7278
Fri.	Troy Spray	Diamond Ranch Academy	Utah	435-862-0706
Thurs.	Erik Srnka	Nord Anglia Education	USA	847-840-3064
Vendor	Whitney Srsen	DreamCatcher Curriculum	Fayetteville, AR	479-419-8080
Fri.	Elizabeth Stafford	Enterhealth	Texas	214-890-6710
	Geoff Stearns	IECA Member	New Canaan, CT	203-966-6993
Thurs.	Cameron Steese	St. Timothy's School	Maryland	410-486-7401
Vendor	Matt Steiner	Compass Education Group	Beverly Hills, CA	213-440-3782
Thurs.	Heather Stenberg	Stephen's Place	Vancouver, WA	971-506-4303
Fri.	Jessica Jo Stenquist	Heritage Community: Elevate Academy	Utah	801-226-4600
Thurs.	Joshua Stevens	Earlham College	Indiana	765-983-1747
Fri.	John Stewart	InnerChange	Utah	801-380-4368
	Morgan Stewart	IECA Member	Atlanta, GA	678-701-4053
Fri.	Nicole Stewart	PsychSolutions	Utah	801-897-7573
Fri.	michele stinnett	Perimeter Healthcare	MO, AR, AL, TN, LA, GA	217-440-5163
Thurs.	Ilana Stoch	Camp Kodiak	Ontario	905-569-7595
Fri.	Jeremy Stokes	Safeguard	Utah	801-763-1319
Fri.	Megan Stokes	NATSAP	Maryland	301-986-8770



# Participants

Table	Name	Affiliation	Location	Phone
Fri.	Laura Storey	Asheville Academy for Girls	North Carolina	828-214-9281
Fri.	Jason Stout	Alpine Academy	Utah	435-228-0100
Fri.	Caitlin Stowell	BRC Recovery	Texas	512-278-4550
Fri.	Heidi Strand	Calo East	Pennsylvania	715-314-0924
Fri.	Jami Sturges	Innercept	Idaho	208-665-7178
	Yvonne Sudarshan	IECA Associate Member	Los Fresnos, TX	956-792-9021
Thurs.	Anne Sullivan	LifeStream Digital Innovations, LLC	New York	914-772-1370
Thurs.	Erin Sullivan	Fay School	Southborough, MA	508-490-8219
Thurs.	Katie Sullivan	EF Gap Year	Cambridge, MA	617-619-1653
	Loretta Summers	IECA Member	Hinsdale, IL	630-887-6905
	Jennifer Sun	IECA Associate Member	Shenzhen, China	86.1363.254.9890
Thurs.	Dominic Susi	Hyde School	Maine	207-443-7197
	Eileen Swoboda	IECA Associate Member	Goleta, CA	571-426-0109
Thurs.	Christa Syfu	Williston Northampton School	Massachusetts	413-529-3401
	Susan Sykes	IECA Member	Hopkins, MN	952-932-9463
Thurs.	Thomas Taggart	Jacksonville University	Jacksonville, FL	904-256-7663
Thurs.	Dave Taibl	The Enrollment Management Association	Skillman, NJ	609-480-7346
Fri.	Sheila Tart-Zelvin	CERTS	Utah	214-679-0095
Fri.	Andrew Taylor	Pure Life Aspiro	Costa Rica	801-896-9490
Thurs.	Brian Taylor	Brehm Preparatory School	Carbondale, IL	618-457-0371
	Jennifer Williams Taylor	IECA Member	Redwood City, CA	650-245-9074
Fri.	paul taylor	Live Strong House	Utah	928-300-5699
Thurs.	Mandy Taylor-Gratzer	Dunn School	California	805-686-0651
	Pamela Tedeschi	IECA Member	Potomac, MD	301-951-0131
	Carmen Tercilla	IECA Member	Miami, FL	305-763-8785
	Kimberly Terry	Mission Oak Group Inc.	N. Salt Lake, UT	512-415-3879
Fri.	Lucy Terzis	CERTS La Europa Academy	Utah	917-478-4703
Fri.	Caitlin Tharaldson	Elements Traverse	Utah	435-691-5228
Vendor	Tim Thayne	Rallyest	Alpine, UT	801-319-0373
Fri.	Dori Them	Dragonfly Transitions	Oregon	541-850-0841
Thurs.	Alan Thompson	Holderness School	New Hampshire	603-779-5233
Thurs.	Laura Thompson	The University of British Columbia	BC, Canada	604-827-5719
	Thalia Thompson	College Admissions Coaching, LLC	Norwalk, CT	203-354-4723
Thurs.	Molly Thompson-Vander Heyden	Albion College	Michigan	517-629-0610
Thurs.	Caleb Thomson	The Fessenden School	Massachusetts	617-630-2314
Fri.	Marty Thomson	Little Keswick School	Virginia	434-295-0457
	Peter Tilles	Princeton College Consulting	Princeton, NJ	609-454-8520
Fri.	Cheyenne Timbimboo	Maple Rise Academy	Utah	435-755-8400
Fri.	Jerald Tisdale	Cumberland Heights	Nashville, TN	615-432-3170
Fri.	John Tock	ReSTART	Washington	971-330-3949
Thurs.	Dwayne Todd	Ohio Wesleyan University	Ohio	740-368-3025
Fri.	Christopher Tolen	Redwood Grove Diagnostics & Transitions	Utah	801-716-0320
Fri.	Bryan Tomes	Equinox RTC	North Carolina	828-772-5542
Fri.	Heather Tracy	New Summit Academy & The Bridge	Costa Rica	800-609-9496
Thurs.	Margaret Traub	Kent School	Connecticut	860-927-6104
Fri.	Reid Treadaway	BlueFire Wilderness Therapy	Idaho	208-610-3232
Fri.	Mona Treadway	Dragonfly Transitions	Oregon	541-850-0841
	Amanda Trevino	Firat Educational Solutions, LLC	Houston, TX	713-871-1048
Fri.	Robert Trout	The Experiential Healing Institute	Oregon	541-699-6976
Thurs.	Cameron Sgroi Tuebner	St. Margaret's School	Virginia	804-443-3357
Thurs.	Ben Tuff	Rumsey Hall School	Connecticut	860-868-0535
Thurs.	Lindsay Tulloss	American University	Washington, DC	202-885-3402
Thurs.	Brian Turk	Augsburg College	Minnesota	612-330-1709
Thurs.	David Tuttle	Westover School	Connecticut	203-758-2423
Thurs.	Traci Tuttle	Muskingum University PLUS Program	Ohio	740-826-8280
Fri.	William Twombly	True North Wilderness Program	Vermont	202-494-0667
	Lucia Tyler	IECA Member	Ithaca, NY	607-280-1434
Fri.	George Ullrich	Innercept	Idaho	208-665-7178
	Susi Vacek	Susi Vacek Education Consulting	Nashville, TN	618-713-5352
	Valerie Vasquez-Guzman	IECA Manager of Education Programs	Virginia	703-591-4850
	Diane Vater	IECA Member	Pittsburgh, PA	412-319-7788

# Participants

Table	Name	Affiliation	Location	Phone
Fri.	Jennifer Venezia	Rosecrance Health Network	Illinois	815-985-5617
Fri.	Grace Verbeck	JRI - Glenhaven Academy	Massachusetts	508-481-8077
	Nina Verma	IECA Associate Member	Frisco, TX	917-647-5717
Fri.	Daniel Villiers	Anxiety Institute	Connecticut	860-992-2453
	Anne Wager	IECA Member	Seattle, WA	206-838-8700
Thurs.	Helen Waldron	The Oxford Academy	Connecticut	860-399-6247
Fri.	Neil Wallace	Heritage Community: Spark Academy	Utah	801-226-4600
	Aaron Wallis	Open Sky Wilderness Therapy	Colorado/Utah	970-382-8181
Fri.	Katie Walsh	Wediko School	New Hampshire	603-478-5236
	Pat Walsh	IECA Associate Member	Middleton, WI	608-841-1053
	Tracey Walsh	Spencer Walsh Law, PLLC	New York, NY	212-401-1959
Fri.	Kjristen Walters	Pure Life Adventure	Costa Rica	617-605-5827
Thurs.	Joy Walton	Florida Institute of Technology	Florida	321-674-8030
Fri.	Ryan Walton	RedCliff Ascent	Utah	801-318-5951
	Jenny Wan	IECA Associate Member	Bedford, NH	617-671-1294
	Xiang (Shawn) Wan	IECA Member	Newton Center, MA	978-930-9008
	Lucy Wang	IECA Member	Great Neck, NY	516-857-6688
	Brenda Ward	IECA Member	Middleton, WI	608-841-1053
Fri.	Theresa Wardle	Boulder Creek Academy	Idaho	877-348-0848
Fri.	Lauren Ware	Greenbrier Academy for Girls	West Virginia	304-445-5497
Thurs.	Jason Warnick	Ross School	New York	631-907-5442
Thurs.	Jim Watkins	Massachusetts Maritime Academy	Massachusetts	508-830-1101
Fri.	Josh Watson	Aspiro Group	Utah	801-349-2740
Fri.	Carrie Weatherhead	Pure Life Adventure	Costa Rica	617-605-5827
Fri.	Shannon Weaver	Aspiro Group	Utah	801-349-2740
Fri.	John Webb	New Focus Academy	Heber City, UT	801-301-2447
Thurs.	Whitney Webb	Launch Generation	San Diego, CA	917-407-6920
	Elizabeth Weber	IECA Member	North Andover, MA	978-686-2284
	Alexis Webster	IECA Student Member	Austin, TX	512-415-1173
Thurs.	Lynden Weddas	Massachusetts College of Pharmacy & Hlth Sci.	Massachusetts	617-947-6410
Thurs.	Adam Weinberg	Denison University	Granville, OH	740-587-5620
	Laurie Weingarten	IECA Member	Marlboro, NJ	732-252-6190
Thurs.	Tim Weir	Midland School	Central Coast CA	805-688-5114
	Anne Weisholtz	IECA Member	Tenafly, NJ	201-568-9326
	Marti Weiskopf	IECA Associate Member	Scottsdale, AZ	602-451-6588
Thurs.	Brittany Weiss	Stoneleigh-Burnham School	Massachusetts	413-774-2711
	Marie Welborn	IECA Associate Member	San Jose, CA	952-201-4494
Thurs.	Ben Welbourn	Verto Education	California	978-430-3844
Thurs.	Sharice Welch	The Stony Brook School	New York	631-751-1800
Thurs.	Jake Weld	Mansfield Hall	VT and WI	802-380-4413
	Brendon Welker	IECA Associate Member	Boston, MA	617-536-4319
Fri.	Michael Welker	Renewed Hope Ranch	Utah	435-628-1682
	Michael Wellons	Family Help & Wellness	SE and SW regions	704-905-4293
	MK Werner	GradPath LLC	Plano, TX	214-729-6524
	Lauren Westendorf	IECA Member	Chagrin Falls, OH	570-856-1675
Fri.	Denise Westman	Pacific Quest	Hawaii	808-345-7315
	Kelly Wewer	IECA Associate Member	Marietta, GA	470-268-6635
Fri.	Benjamin White	BaMidbar Wilderness Therapy	Colorado	720-808-1449
Fri.	Glenn White	Dragonfly Transitions	Oregon	541-850-0841
Fri.	Josh White	Red Mountain Sedona	Arizona	928-300-3049
Thurs.	Sam White	Pine Manor College	Massachusetts	617-731-7107
Fri.	Will White	Summit Achievement	Maine	207-697-2020
Fri.	Shane Whiting	Daniels Academy	Utah	435-709-7050
Thurs.	Beth Whitney	Fay School	Massachusetts	508-490-8201
Fri.	Amy Whittaker	West Ridge Academy	West Jordan, UT	801-282-1000
Fri.	Maggie Wiener	Lake House Academy	North Carolina	828-355-4595
Thurs.	Nick Wilbur	Brewster Academy	New Hampshire	603-569-7178
Fri.	Brooks Wiley	Diamond Ranch Academy	Utah	435-635-4297
	Belinda Wilkerson	IECA Member	Fayetteville, NC	401-447-4273
Thurs.	James Williams	Bloom Consulting	Texas	512-537-1661
Fri.	Shawna Wilson	CERTS Mountain Springs Prep Academy	Utah	435-592-3220

# Participants

Table	Name	Affiliation	Location	Phone
Fri.	Anne Wilzbacher	Blue Ridge Therapeutic Wilderness	Georgia	516-662-1494
	Joan Wittan	IECA Member	N. Potomac, MD	240-353-2385
Fri.	Kristin Wolfe	Pasadena Villa	TN, FL & NC	317-771-7827
	Joyce Wong	IECA Associate Member	Fremont, CA	510-353-0400
Fri.	Christie Woodfin	IECA Member	Atlanta, GA	404-249-9898
	Amanda Woolard	Lake House Academy	North Carolina	828-355-4595
	Betsy Woolf	IECA Member	Mamaroneck, NY	914-381-6338
Fri.	Jackie Woolley	IECA Associate Member	Rancho Santa Fe, CA	619-993-5194
	Jon Worbets	BlueFire Wilderness Therapy	Idaho	208-934-4444
Fri.	Caitlin Worsham	IECA Associate Member	Charleston, SC	206-330-6935
	Andre Wright	Foundation for Independent Living, Inc.	Florida	954-968-6472
	Jeanette Wright	IECA Associate Member	La Jolla, CA	858-354-2029
Thurs.	Jou-Hua (Nancy) Wu	IECA Associate Member	Woburn, MA	617-301-5106
	Sonia Wu	New College of Florida	Sarasota, FL	941-487-4461
Vendor	Jacqueline Yamada	Independent School Management	Wilmington, DE	302-218-1239
	Valerie Yellin	IECA Associate Member	Marietta, GA	404-303-1118
Fri.	Jonathan Young	Blue Ridge Therapeutic Wilderness	Clayton, GA	706-212-2037
	Judy Young	IECA Associate Member	Richmond, TX	713-539-4902
	Perry Youngblood	IECA Member	Southern Pines, NC	910-528-5595
Fri.	Ed Zadravec	Wediko Summer Program	New Hampshire	617-230-1855
Fri.	Dianne Zager	Shrub Oak International School	New York	914-885-0110
	Cathy Zales	IECA Member	New Canaan, CT	203-966-6891
	Sue Zhong	IECA Member	Seattle, WA	408-730-9408
Fri.	Bernie Zimmerman	Cherry Gulch	Idaho	208-365-3437
Fri.	Krista Zimmerman	Cherry Gulch	Idaho	208-365-3437
Fri.	Linda Zimmerman	Sandhill Child Development Center	New Mexico	505-866-9271
Fri.	Patty Ziplow	IECA Associate Member	Stream, NY	516-695-6452
	Mike Zumwalt	Clearfork Academy	Texas	817-259-2597
	Mike Zweifel	Heather R. Hayes & Associates	Georgia	480-255-1220